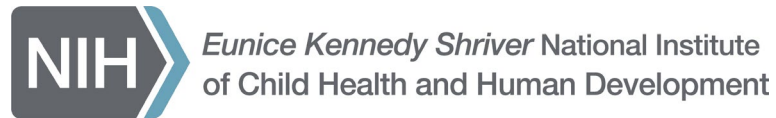


Updates from the NICHD Acting Director

National Advisory Council for Child Health and Human Development

Alison N. Cernich, PhD

June 09, 2025



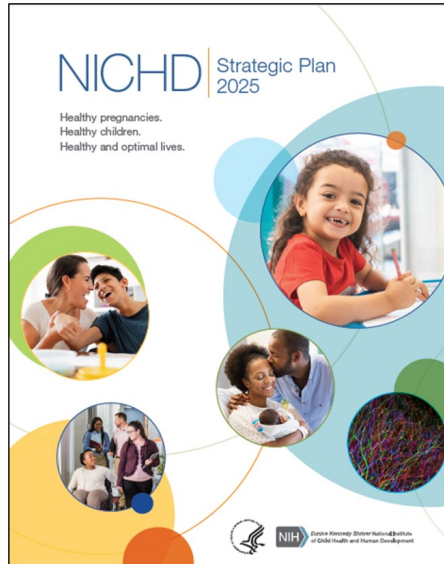
Talk Outline

- NICHD Program Updates
- HHS/NIH Leadership Updates
- NICHD Budget Update
- NIH Program and Policy Updates



NICHD Program Updates

NICHD Strategic Plan 2025: Research Goals



2024 Research Highlights Recap



- Visit NICHD's [2024 Selected Research Advances showcase](#):
- Supporting Women's Health
- Improving Postpartum Health Outcomes
- Advancing Fetal and Neonatal Health
- Improving Care for Pediatric Injury
- Advancing Child and Adolescent Health
- Treating and Understanding Pediatric Infections
- Addressing Health Disparities for People with Disabilities
- Expanding Research on Intellectual and Developmental Disabilities
- Advancing Medical Rehabilitation Research
- Discovering How Cells are Programmed



NICHD Data and Specimen Hub (DASH)

- Centralized resource that allows researchers to share and access de-identified data from studies funded by NICHD
 - More than 230 studies on over 60 topics
- Migrating data to another long-running NIH data repository platform that will provide additional functionality and security
- **Data unavailable beginning May 5, 2025**
- **Anticipate data being available again in Fall 2025**



Autism Data Science Initiative

OTA-25-006: DPCPSI \$50M Autism Data Science Initiative will explore causation of autism spectrum disorder (ASD) link)

Strategic Aims:

- Create integrated data resources leveraging existing data (with appropriate privacy protections)
- Identify and address gaps via targeted data generation
- Support analysis of integrated data resources that link genetic and non-genetic factors
- Provide venue for replication of these analyses by independent teams to validate findings
- Complement distinct effort to develop a Real World Data Platform

Application Due Date: June 27, 2025

Total Cost/Award: Up to ~ \$5M per 24- to 36-month project period



NASEM study: Strategies to Enhance Pediatric Health Research Funded by NIH

- NASEM committee examining current NIH pediatric research portfolio and structure
- Several NIH ICs participated in webinars
- Call for Perspectives – Closes June 30 and July 1, respectively
 - Pediatric Patients and Families - <https://survey.alchemer.com/s3/8328252/Patient-and-Family-Perspectives-on-NIH-funded-Pediatric-Research>
 - Pediatric Health Researchers - <https://survey.alchemer.com/s3/8274911/NIH-Call-for-Perspectives>
- Report release anticipated in January 2026





HHS/NIH Leadership Updates

HHS Leadership and Priorities

- February 13, 2025: President Trump established the Make America Healthy Again Commission and requested an assessment to address childhood chronic disease
- May 22, 2025: [MAHA Commission Report](#) published with 4 key focus areas
 - Poor diet
 - Exposure to environmental chemicals
 - Lack of physical activity and chronic stress
 - Overmedicalization
- Ten recommended research areas range from long-term nutrition trials to lifestyle interventions to precision toxicology
- [Operation Stork Speed](#) - initiative to ensure the safety, reliability, and nutritional adequacy of infant formula
 - [Request for Information on Infant Formula Nutrient Requirements](#)



HHS Secretary
Robert F. Kennedy, Jr.



NIH Leadership

- Dr. Jay Bhattacharya, NIH Director
- Dr. Matt Memoli, NIH Principal Deputy Director
- NIH IC leadership – New Acting Directors
 - NINR: Courtney Aklin
 - NIMH: Andrea Beckel-Mitchener
 - NICHD: Alison Cernich
 - NHGRI: Carolyn Hutter
 - NIAID: Jeff Taubenberger
 - NIMHD: Monica Webb Hooper
 - DPCPSI: Nicole Kleinstreuer
 - OER: Jon Lorsch (also NIGMS Director)



NIH Leadership Priorities

- **Focus on Improving Population Health:** NIH must address the health needs of the American people, including the chronic disease crises.
- **Reproducibility and Rigor:** NIH must conduct and support rigorous, reproducible, and unbiased research.
- **Innovation and Collaboration:** NIH must be at the forefront of biomedical innovation.
- **Research Safety and Transparency:** NIH research must meet the highest ethical standards, and NIH must maintain the highest standards of transparency.
- **Academic Freedom:** Advances in science require the freedom to think differently from the scientific consensus.





NICHD Budget Update

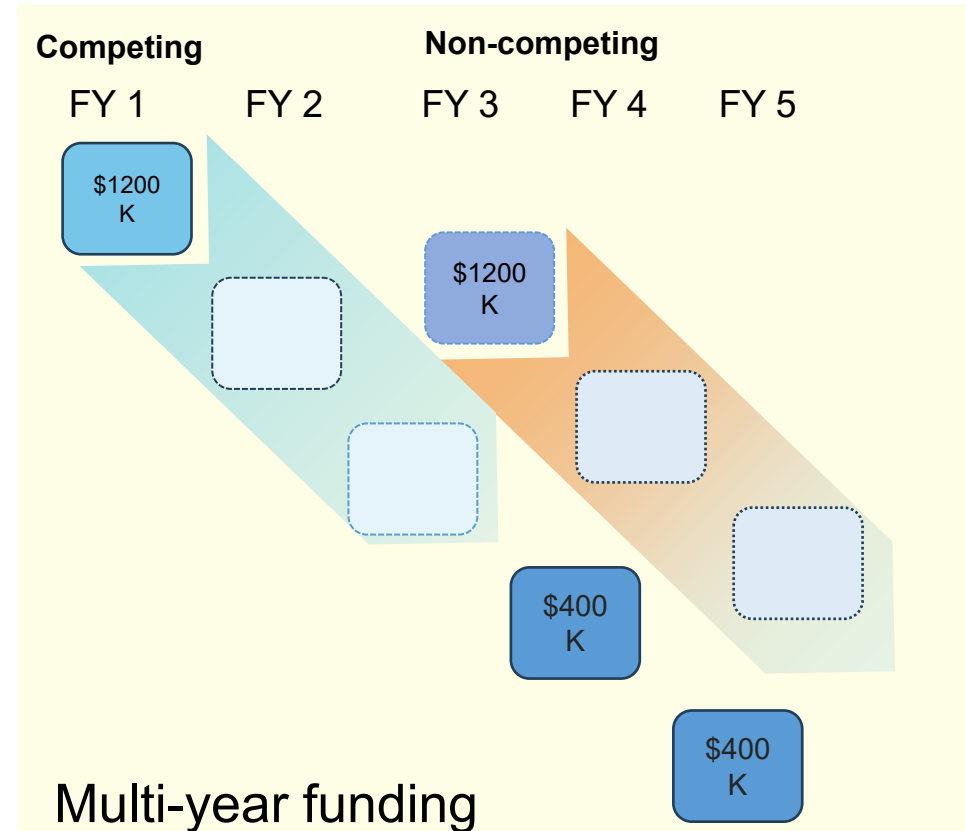
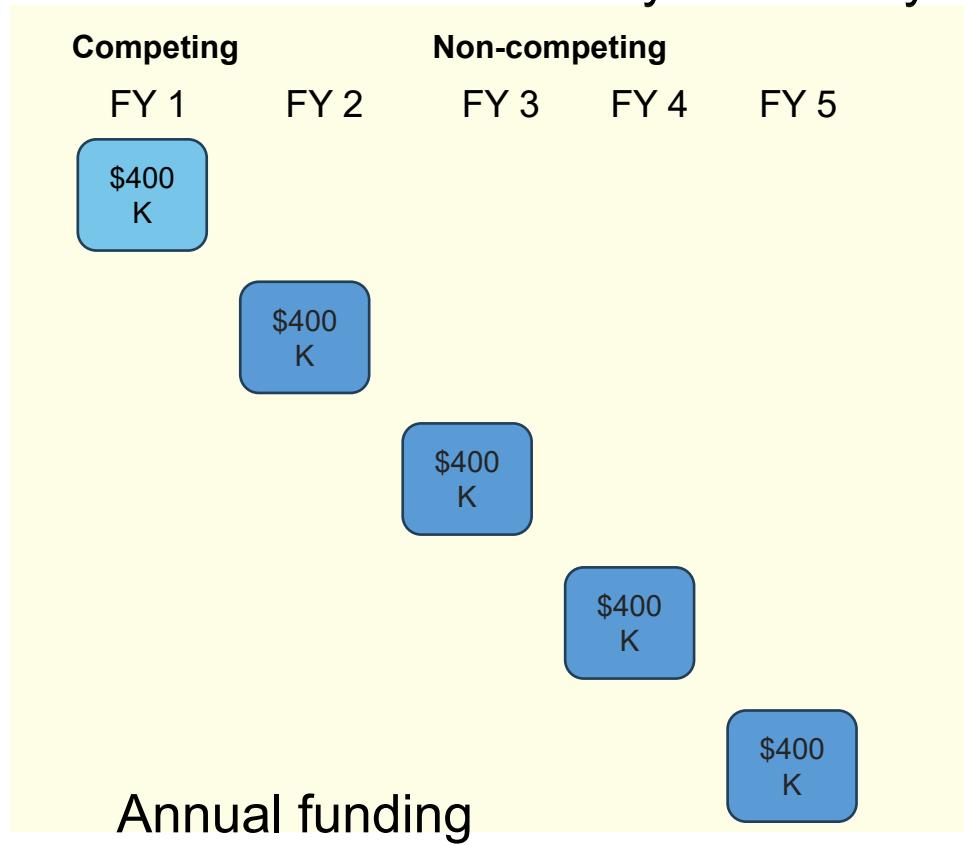
NICHD Budget

- **FY25**
 - NICHD plans to obligate all FY25 funds
- **FY26 President's "Skinny" Budget (May 2, 2025)**
 - Includes \$18B cut to NIH; consolidation to 8 ICs
 - NICHD proposed to merge with the National Institute on Deafness and Other Communication Disorders (NIDCD)
 - Eliminated ICs: FIC, NIMHD, NINR, NCCIH
- **FY26 HHS Budget in Brief (May 30, 2025)**
 - Proposed 40% budget cut for combined NICHD-NIDCD institute titled: National Institute for Child and Women's Health, Sensory Disorders, and Communication
- **FY26 HHS Budget in Brief (June 5, 2025)**
 - Includes additional guidance on multi-year funding for FY25 and FY26 and personnel



Potential Multi-Year Funding (MYF) of Grant Awards

- MYF provides funds for multiple years of a grant award in one year
- Cons: Expensive in the year of obligation, limiting total awards that FY
- Pros: Offers more flexibility in the outyears



Typically, over 68% of NICHD extramural funds are reserved for expected non-competing awards



Recent Challenges

- Reduction in workforce
- NICHD lost staff in key functional areas
 - Some functions may be centralized at NIH or HHS
- Other challenges
 - Pause in acquisitions, travel, communications, meetings (now re-starting)
 - Pause in Councils and reviews (re-started)
 - Reduction in number of Notices of Funding Announcement (NOFOs)
 - Halt on paying foreign subawards/increased need for foreign justifications in grant applications
 - Award holds and terminations





NIH Program and Policy Updates

NIH Prioritization of Human-Based Research Technologies

- Initiative to develop and expand use of nonanimal models
- Intent to establish the Office of Research Innovation, Validation, and Application (ORIVA) within the NIH Office of the Director
 - Coordinate NIH-wide efforts to develop, validate, and scale use of nonanimal approaches
 - Alternatives to use either alone or in combination with animal models include:
 - Organoids, tissue chips, other in vitro systems
 - Computational models
 - Real world data



New NIH Foreign Subaward Structure

- Guide Notice [NOT-OD-25-104](#)
- Temporary pause for foreign subawards while NIH finalizes new award structure (anticipated September 2025)
- Applies to all new, renewal, and non-competing continuation awards
- Effective May 1, 2025, NIH will:
 - Not issue awards to domestic or foreign entities that include a subaward to a foreign entity.
 - No longer accept requests to add a new foreign component or subaward to an ongoing project.
 - Renegotiate awards to remove subawards to foreign entities; allow rebudgeting for the prime recipient when the work can be performed domestically
 - Work with recipients to negotiate bilateral termination if a project is no longer viable without the foreign subaward, with consideration to ensure participant safety and/or animal welfare



Extending Opportunities to Support Early Career Researchers

- NIH has granted automatic extension of Early Stage Investigator (ESI) eligibility of one, two, or three receipt cycles
 - Eligibility details: <https://grants.nih.gov/grants/guide/notice-files/NOT-OD-25-114.html>
- Extended eligibility for some mentored career development (K) awards
 - For awards ended prematurely after January 1, 2025, recipients may apply for a new mentored career development award
 - <https://grants.nih.gov/grants/guide/notice-files/NOT-OD-25-115.html>





Thank You!
Questions?