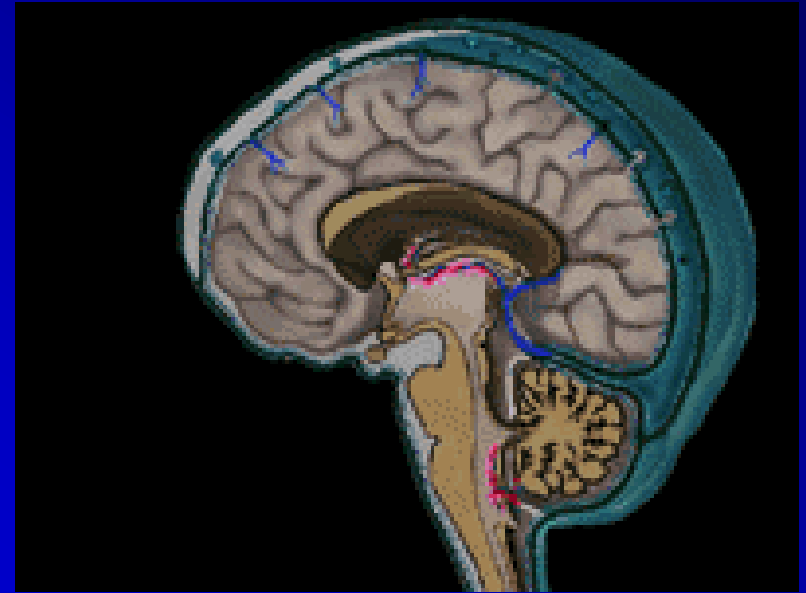


NIH Funding Opportunities for Trainees and New Investigators



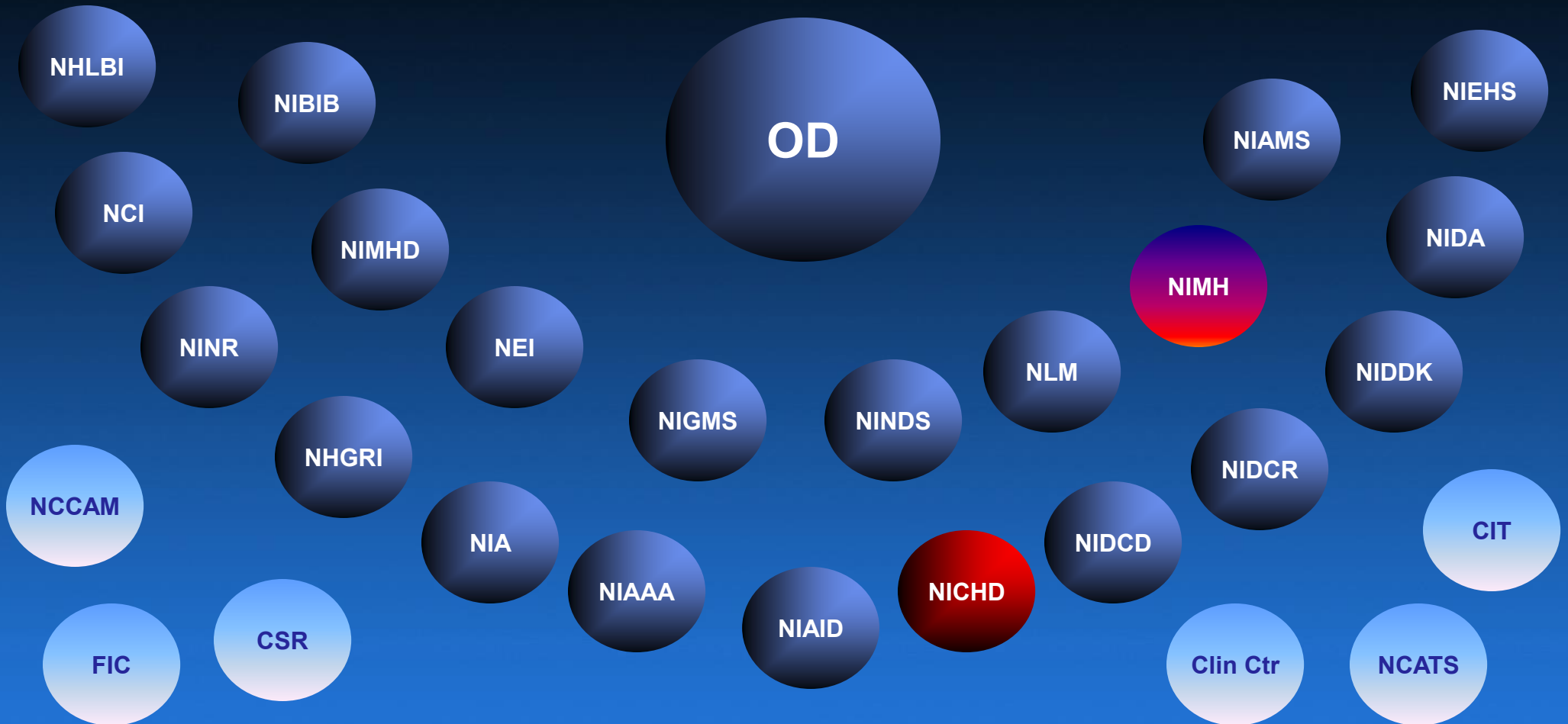
Dennis A. Twombly, Ph.D.
Deputy Director
Office of Extramural Policy
NICHD Training Director

Eunice Kennedy Shriver
National Institute of Child Health and
Human Development (NICHD)

dtwombly@mail.nih.gov

NIH Organization

Grant applications must be relevant to Institute mission !



NIH Institutes - Research Mission

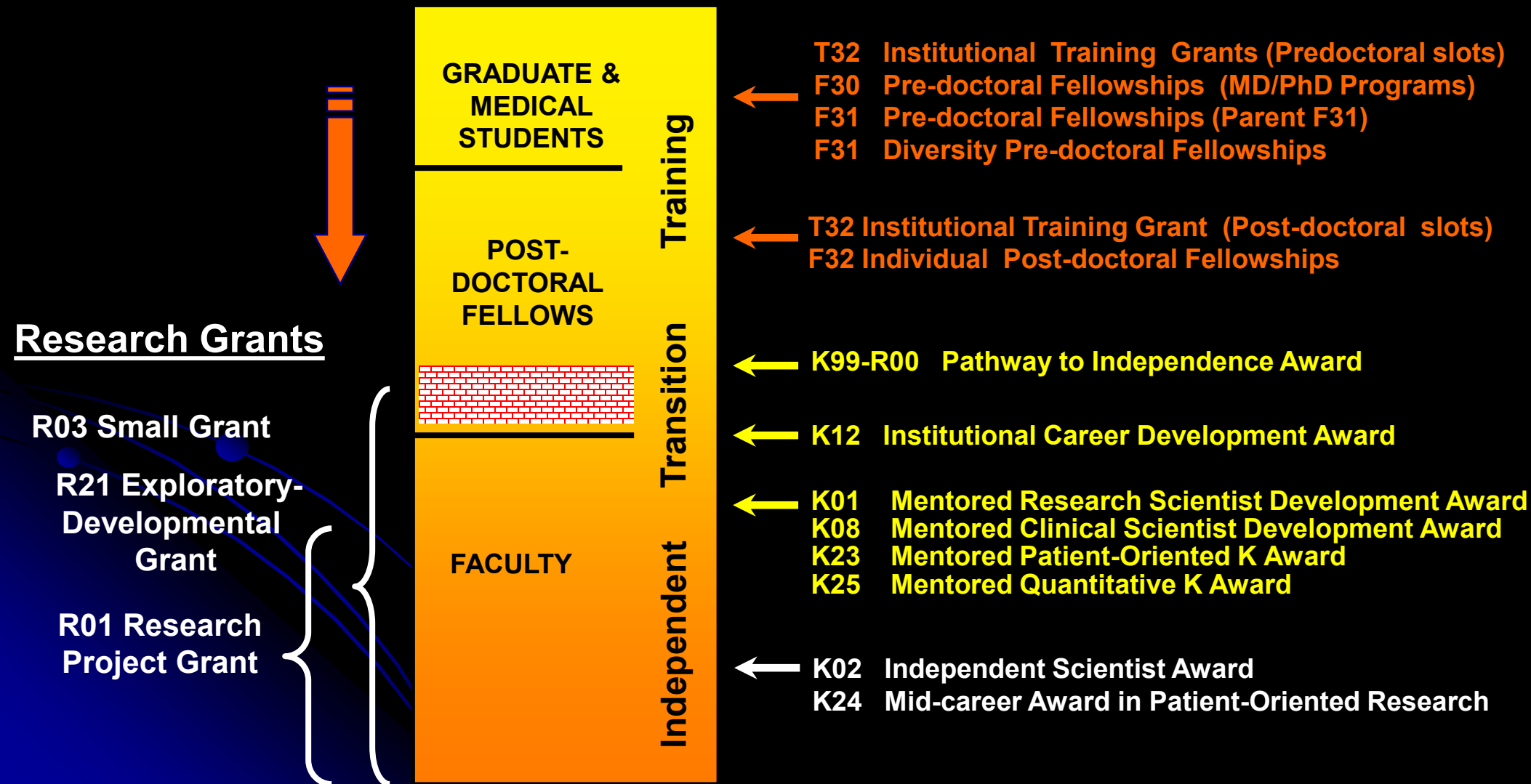
NICHD offers fellowships (F), career development awards (K), institutional training grants (T32, K12), and research project grants (eg, R01, R03, R21) in areas relevant to

normal and abnormal human development, including contraception, fertilization, pregnancy, childbirth, prenatal and postnatal development, and childhood development through adolescence. The mission areas also include research on intellectual and developmental disabilities and rehabilitation medicine.

<http://www.nichd.nih.gov>

Research Training and Career Development

Fellowships & Career Awards



Refer to Program Announcements (PAs) !!

Funding Opportunity Title

Ruth L. Kirschstein National Research Service Awards for Individual Predoctoral Fellows (Parent F31)

Funding Opportunity Announcement (FOA) Number

PA-11-111

Components of Participating Organizations

National Cancer Institute (NCI)

National Institute on Aging (NIA)

National Institute on Alcohol Abuse and Alcoholism (NIAAA)

Eunice Kennedy Shriver National Institute of Child Health and Human Development (NICHHD)

National Institute on Deafness and Other Communication Disorders (NIDCD)

National Institute on Drug Abuse (NIDA)

National Institute of Mental Health (NIMH)

National Institute of Neurological Disorders and Stroke (NINDS)

Special Note: Applicants are cautioned that not all NIH Institutes and Centers (ICs) participate in this program, and that consultation with relevant IC staff prior to submission of an application is strongly encouraged. The participating ICs have different emphases and program requirements for this program. Therefore, a prospective applicant is urged to consult the **Table of IC-Specific Information, Requirements and Staff Contacts** to determine whether the planned research and training falls within the mission of one of the participating NIH ICs.

Career Development Awards (K-awards)

Basic Scientists:

- K99 Pathway to Independence Award
- K22 Career Transition Award (not NICHD)
- K01 Mentored Research Scientist Development Award
- K25 Mentored Quantitative Career Development Award
- K02 Independent Scientist Award (for funded scientist)

Clinician-scientists:

- K99 Pathway to Independence Award
- K22 Career Transition Award (not NICHD)
- K08 Mentored Clinical Scientist Development Award
- K23 Mentored Patient-oriented Career Development Award
- K02 Independent Scientist Award (for funded scientist)
- K24 Mid-Career Investigator Award in Patient-Oriented Research

Mentored Career Development (K) Awards

<u>Purpose:</u>	Develop new research skills, release time for research and training activities in the biomedical, behavioral, or clinical sciences
<u>Eligibility:</u>	Doctoral degree (MD, PhD, MD/PhD, PhD, DDS, etc.) US Citizens or permanent residents (except K99)
<u>Duration:</u>	3 - 5 years
<u>Commitment:</u>	Minimum 75% effort for mentored awards
<u>Support:</u>	Salary \$75,000 + fringe (typical; IC dependent)
<u>Research support:</u>	\$25,000 to \$50,000

Research must be related to NIH Institute mission!!

Mentored Research Scientist Development Award (K01)

Purpose: ... to provide support and “protected time” for a supervised career development experience in the biomedical, behavioral, or clinical sciences leading to research independence.

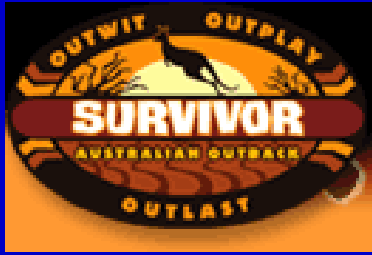
NICHD supports K01 awards in 3 areas only:

- Medical rehabilitation medicine
- Child abuse & neglect
- Population research

Check Program Announcement & Institute Tables !!

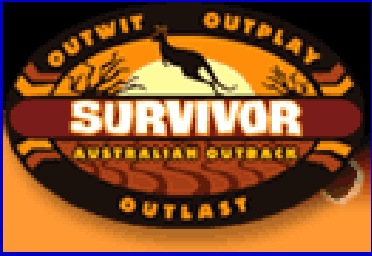
Mentored Clinical Scientist Development Award (K08 & K23)

- Encourage clinical scientists to pursue a research career
- Must have a MD, MD/PhD, PhD, DDS, or other clinical doctoral degree (eg, clinical psychology, physical therapy, nursing)
- **K08:** for basic research
- **K23:** for patient-oriented research
 - May be eligible for K01, K08, K23, K99
 - 6 years aggregate support through K12 + Individual K



Pathway to Independence Award (K99/R00)

- **Purpose:** *To help new researchers secure a tenure-track position and launch an independent research career.*
- **K99 mentored phase (1-2 years)**
 - Supports late-stage **postdoctoral** research training
 - Provides salary + limited research expenses (varies, see IC Tables)
- **R00 Phase (up to 3 years)**
 - Requires tenure track or equivalent **faculty position**
 - Launch independent research program
 - \$249,000 **total costs** per year (direct costs + full indirect costs)

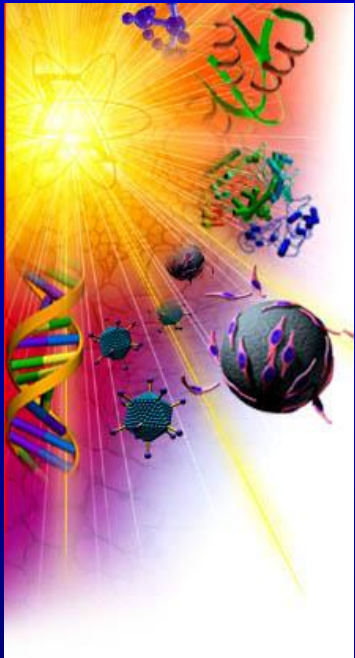


K99/R00 Eligibility

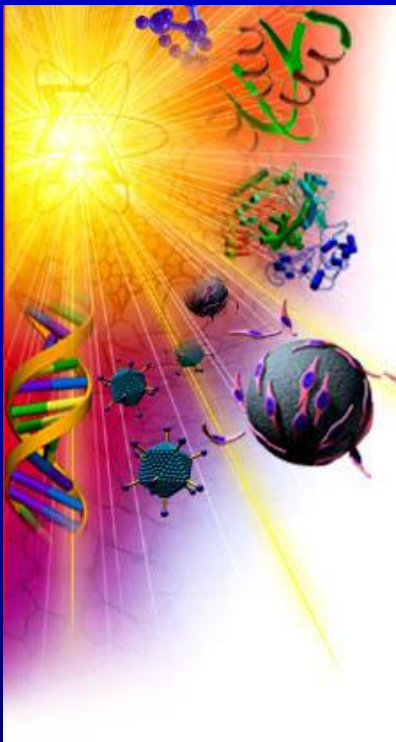
- Basic or clinical doctoral degree (ie, postdoctoral fellow or equivalent)
- Domestic extramural or intramural institutions
- US citizens or non-citizens
- No more than **4 years** postdoctoral research experience (-01 or -A1)
 - Possible exceptions for purely clinical time or family/medical leave
- Cannot have held independent faculty-level position
- Cannot have been independent Principal Investigator on:
 - Career Development Awards (K01, K08, K23, K25)
 - Research project grants (R01, R03, R21, program/center component)
 - Other peer-reviewed NIH or non-NIH grants >\$100,000 /yr direct costs
 - Project leaders on sub-projects of Program Project (P01) or Center (P50) grants

Early Stage Research Grants

- **R03: NIH Small Grants Program**
 - Small, self-contained projects; pilot or feasibility studies; development of new technology
 - 2 years; up to \$50,000 per year
 - No preliminary data expected
- **R21: Exploratory/Developmental Grants**
 - Novel, high-risk pilot-scale projects; assess feasibility of new research area; develop novel techniques, agents, methods, models
 - 2 years; up to \$275,000 direct costs overall
 - Preliminary data helpful but not required



NIH Research Project Grant (R01)



- Full-scale research grant (“Gold Standard”)
- Individual or multi-Principal Investigator (PD/PI)
- PI must have faculty status
- Up to 5 years in duration
- Up to \$250,000 or more; potentially unlimited
- Preliminary data is essential
- Special program for New Investigators (or ESI) !!

Funding for New Investigators and Early Stage Investigators

- **“New Investigator”**: Applicant who has not previously competed successfully as PD/PI for a significant NIH independent research award (i.e., R01 grant)
- NIH funds R01s of New Investigators and ESIs at ***more favorable paylines !!***
- Pay lines and relative advantage differ by NIH Institute; 3%-10% more generous paylines
- Advice for New and Early Stage Investigators
 - Apply for R01 now !!!!! (*If you have preliminary data*)



Application Receipt Dates

<u>Grant Mechanism</u>	<u>Cycle I</u>	<u>Cycle II</u>	<u>Cycle III</u>
R01, U01 (new) (Renewal/resubmission)	Feb 5 Mar 5	Jun 5 Jul 5	Oct 5 Nov 5
R03, R21 (new) (resubmission)	Feb 16 Mar 16	Jun 16 Jul 16	Oct 16 Nov 16
K series (new) (resubmission)	Feb 12 Mar 12	Jun 12 Jul 12	Oct 12 Nov 12
F31, F32 (new, resubmission)	Apr 8	Aug 8	Dec 8
Diversity F31 (new, resubmission)	Apr 13	Aug 13	Dec 13
T32 (new, resubmission)	May 25 (most ICs, including NICHD)		

Review Date	Jun-Jul	Oct-Nov	Feb-Mar
Advisory Council	Sept-Oct	Jan-Feb	May-Jun
Earliest start date	Dec	Apr	Jul

<http://grants.nih.gov/grants/funding/submissionschedule.htm>

Funding: Sources of Guidance

- NIH Program Announcements (PAs, RFAs)
 - Purpose, eligibility, allowable costs, review criteria
 - Tables of IC-specific Information, Requirements, & Staff Contacts
- www.nih.gov (follow links to “training” or “peer review”)
 - Office of Extramural Research (“OER” grant programs, forms)
 - Center for Scientific Review: www.csr.nih.gov (review process)
 - Institute web sites: www.nichd.nih.gov (program interests)
- Mentor (current and/or proposed)
- Department Chair or Administrator
- University/School Sponsored Programs Office
- Other colleagues & faculty
- NIH Program Staff (before applying and after review) !!

NIH Research Portfolio Online Reporting Tools (RePORT) - Windows Internet Explorer

http://report.nih.gov/

U. S. Department of Health & Human Services
www.hhs.gov

NATIONAL INSTITUTES OF HEALTH
Research Portfolio Online Reporting Tools (RePORT)
REPORTS, DATA AND ANALYSES OF NIH RESEARCH ACTIVITIES

Site Map
SEARCH GO

FREQUENTLY REQUESTED REPORTS | REPORTS | CATEGORICAL SPENDING | RePORTER | GLOSSARY | FAQs | LINKS

NEWS UPDATES NEW
Wednesday, February 2, 2011
The RePORT website has launched a newsletter, The ReSource
[read more...](#)

NIH DATA BOOK
The NIH Data Book (NDB) provides basic summary statistics on extramural grants and contract awards, grant applications, the organizations that NIH supports, the scientific workforce, and trainees and fellows supported through NIH programs. Tables and charts are provided in a variety of formats, including PowerPoint (PPT) slides and Portable Document Format (PDF) files.
[More >>](#) [1](#) [2](#) [3](#) [4](#) [5](#)

RePORTER
SEARCH PORTFOLIOS OF FUNDED RESEARCH

QUICK LINKS

- FUNDING FACTS BETA** NEW
- RECOVERY ACT**
- NIH RECOVERY ACT INVESTMENT REPORTS**
- NIH FACT SHEETS** NEW
- RePORT TUTORIAL**

Strategic Plans

Budget & Spending

Success Rates

Categorical Spending

Funded Organizations

Investigators and Trainees

Local intranet 125%

Thank You !

NICHD Training Contact:

Dennis A. Twombly, Ph.D.

NICHD Training Officer

Phone: (301) 451-3371

Email: dtwombly@mail.nih.gov

NICHD Website: <http://www.nichd.nih.gov/>

NIH Website: <http://www.nih.gov>

