

NIH Funding Opportunities for Trainees and New Investigators



Dennis A. Twombly, Ph.D.
Deputy Director
Office of Extramural Policy
NICHD Training Director

Eunice Kennedy Shriver
National Institute of Child Health and
Human Development (NICHD)

dtwombly@mail.nih.gov

NIH Institutes - Research Mission

NICHD offers fellowships (F), career development awards (K), institutional training grants (T32, K12), and research project grants (eg, R01, R03, R21) in areas relevant to

normal and abnormal human development, including contraception, fertilization, pregnancy, childbirth, prenatal and postnatal development, and childhood development through adolescence. The mission areas also include research on intellectual and developmental disabilities and rehabilitation medicine.

http://www.nichd.nih.gov/research/org/supported_by.cfm

Refer to Program Announcements (PAs) !!

Funding Opportunity Title

Ruth L. Kirschstein National Research Service Awards for Individual Predoctoral Fellows (Parent F31)

Funding Opportunity Announcement (FOA) Number

PA-11-111

Components of Participating Organizations

National Cancer Institute (NCI)

National Institute on Aging (NIA)

National Institute on Alcohol Abuse and Alcoholism (NIAAA)

Eunice Kennedy Shriver National Institute of Child Health and Human Development (NICHHD)

National Institute on Deafness and Other Communication Disorders (NIDCD)

National Institute on Drug Abuse (NIDA)

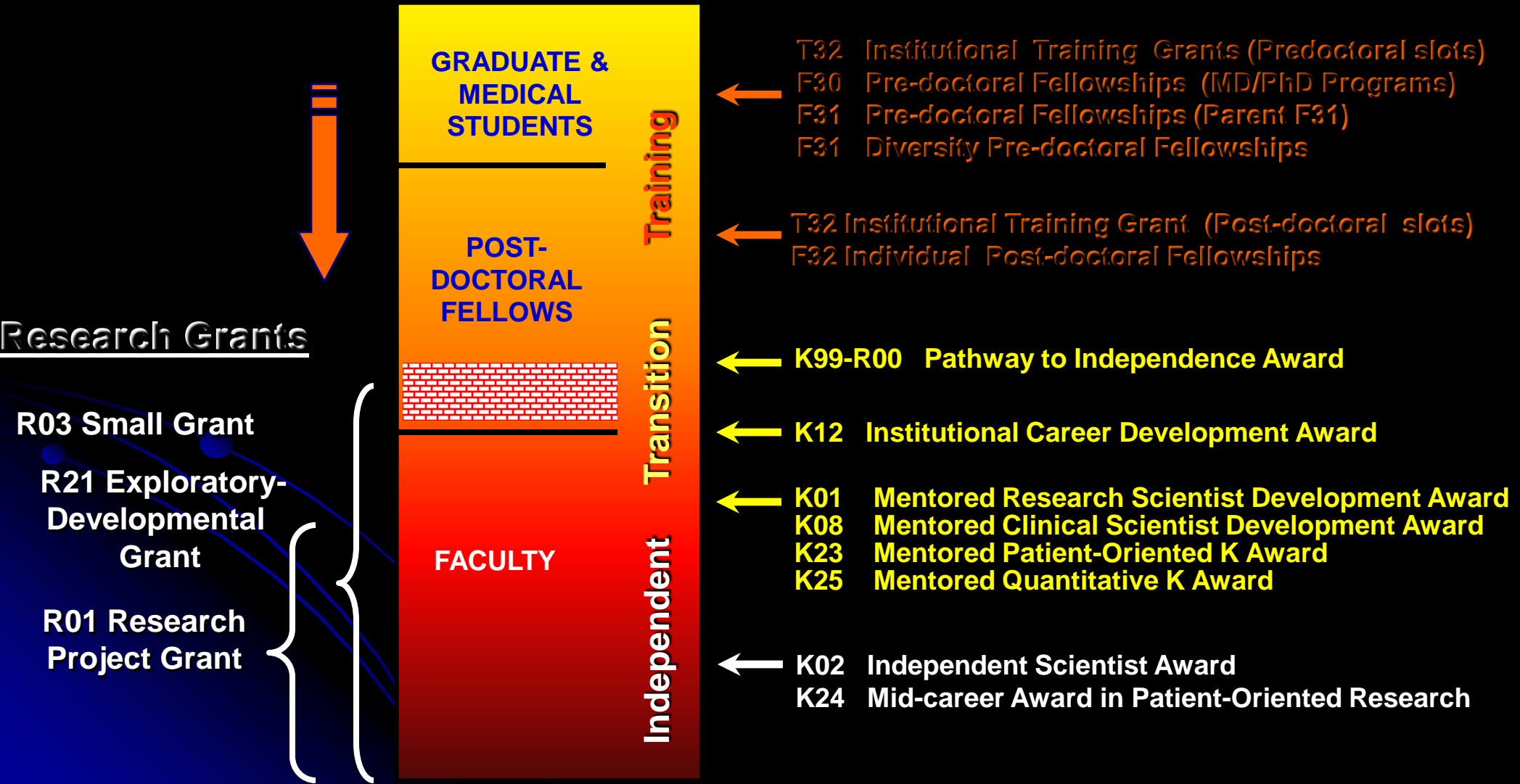
National Institute of Mental Health (NIMH)

National Institute of Neurological Disorders and Stroke (NINDS)

Special Note: Applicants are cautioned that not all NIH Institutes and Centers (ICs) participate in this program, and that consultation with relevant IC staff prior to submission of an application is strongly encouraged. The participating ICs have different emphases and program requirements for this program. Therefore, a prospective applicant is urged to consult the **Table of IC-Specific Information, Requirements and Staff Contacts** to determine whether the planned research and training falls within the mission of one of the participating NIH ICs.

Research Training and Career Development

Fellowships & Career Awards



Career Development Awards (K-awards)

Basic Scientists:

- K99 Pathway to Independence Award
- K22 Career Transition Award (not NICHD)
- K01 Mentored Research Scientist Development Award
- K25 Mentored Quantitative Career Development Award
- K02 Independent Scientist Award (for funded scientist)

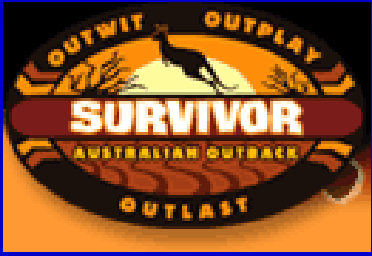
Clinician-scientists:

- K99 Pathway to Independence Award
- K22 Career Transition Award (not NICHD)
- K08 Mentored Clinical Scientist Development Award
- K23 Mentored Patient-oriented Career Development Award
- K02 Independent Scientist Award (for funded scientist)
- K24 Mid-Career Investigator Award in Patient-Oriented Research



Pathway to Independence Award (K99/R00)

- **Purpose:** *To help new researchers secure a tenure-track position and launch an independent research career.*
- **K99 mentored phase (1-2 years)**
 - Supports late-stage postdoctoral research training
 - Provides salary + limited research expenses (varies, see IC Tables)
- **R00 Phase (up to 3 years)**
 - Requires tenure track or equivalent faculty position
 - Launch independent research program
 - \$249,000 ***total costs*** per year (direct costs + full indirect costs)



K99/R00 Eligibility

- Basic or clinical doctoral degree (ie, postdoctoral fellow or equivalent)
- Domestic extramural or intramural institutions
- US citizens or non-citizens
- No more than **4 years** postdoctoral research experience (-01 or –A1)
 - Possible exceptions for purely clinical time or family/medical leave
- Cannot have held independent faculty-level position
- Cannot have been independent Principal Investigator on:
 - Career Development Awards (K01, K08, K23, K25)
 - Research project grants (R01, R03, R21, program/center component)
 - Other peer-reviewed NIH or non-NIH grants >\$100,000 /yr direct costs
 - Project leaders on sub-projects of Program Project (P01) or Center (P50) grants

Mentored Career Development (K) Awards

<u>Purpose:</u>	Develop new research skills, release time for research and training activities in the biomedical, behavioral, or clinical sciences
<u>Eligibility:</u>	Doctoral degree (MD, PhD, MD/PhD, PhD, DDS, etc.) US Citizens or permanent residents (except K99)
<u>Duration:</u>	3 - 5 years
<u>Commitment:</u>	Minimum 75% effort for mentored awards
<u>Support:</u>	Salary \$75,000 + fringe (typical; IC dependent)
<u>Research support:</u>	\$25,000 to \$50,000

Research must be related to NIH Institute mission!!

Mentored Research Scientist Development Award (K01)

Purpose: ... to provide support and “protected time” for a supervised career development experience in the biomedical, behavioral, or clinical sciences leading to research independence.

NICHD supports K01 awards in 3 areas only:

- Medical rehabilitation medicine
- Child abuse & neglect
- Population research

Check Program Announcement & Institute Tables !!

Mentored Clinical Scientist Development Award (K08 & K23)

- Encourage clinical scientists to pursue a research career
- Must have a MD, MD/PhD, PhD, DDS, or other clinical doctoral degree (eg, clinical psychology, physical therapy, nursing)
- K08: for basic research
- K23: for patient-oriented research
 - May be eligible for K01, K08, K23, K99
 - Contact Program staff for guidance !

Ineligible K-Award applicants

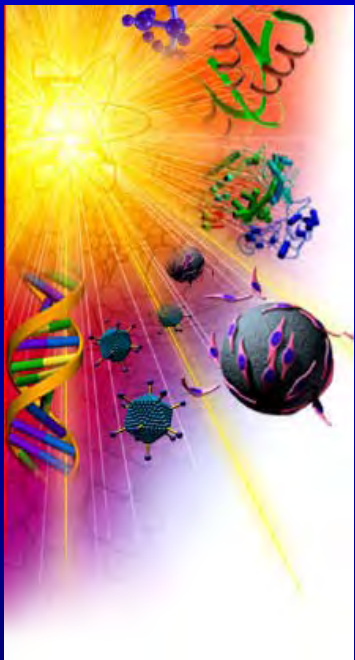
K01 / K08 / K23 applicants may not simultaneously submit, have an application pending for, or be a current or former PI on:

- **NIH research project grant (R01)**
- **Sub-project of program project (P01) or center (P50/P60) grants**
- **Equivalent non-PHS peer-reviewed research grants over \$100,000 direct costs per year**
- **Comparable individual career development awards (e.g., K01, K07, K08, K23, K25)**

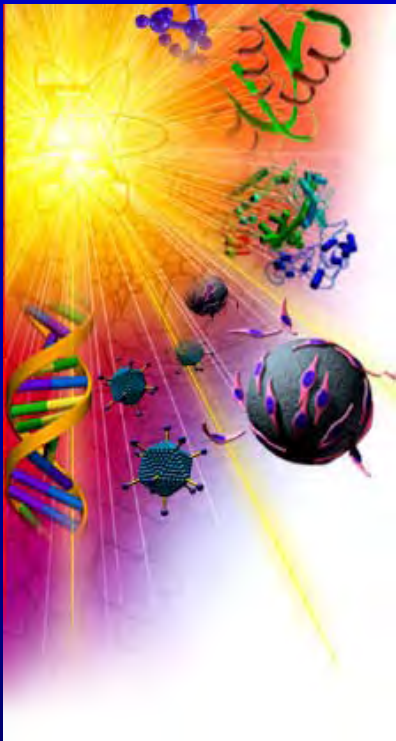
**** Former Principal Investigators of NIH Small Grants (R03) or Exploratory/Developmental Grants (R21) remain eligible**

Early Stage Research Grants

- **R03: NIH Small Grants Program**
 - Small, self-contained projects; pilot or feasibility studies; development of new technology
 - 2 years; up to \$50,000 per year
 - No preliminary data expected
- **R21: Exploratory/Developmental Grants**
 - Novel, high-risk pilot-scale projects; assess feasibility of new research area; develop novel techniques, agents, methods, models
 - 2 years; up to \$275,000 direct costs overall
 - Preliminary data helpful but not required



NIH Research Project Grant (R01)



- Full-scale research grant (“Gold Standard”)
- Individual or multi-Principal Investigator (PD/PI)
- PI must have faculty status
- Up to 5 years in duration
- Up to \$250,000 or more; potentially unlimited
- Preliminary data is essential
- Special program for New Investigators (or ESI) !!

Funding for New Investigators and Early Stage Investigators

- “**New Investigator**”: Applicant who has not previously competed successfully as PD/PI for a significant NIH independent research award (i.e., R01 grant)
- NIH funds R01s of New Investigators and ESIs at ***more favorable pay lines*** !!
- Pay lines and relative advantage differ by NIH Institute; 3%-10% more generous paylines
- Advice for New and Early Stage Investigators
 - Apply for R01 now !!!!! (*If you have preliminary data*)

Which NIH Institute and Which Study Section?

- Find Program Announcement (e.g., K08, K23, R03, R21, R01)
- Send abstract or Specific Aims to **Scientific/Research Contact** on program announcement (Dr. Twombly for F/K/T awards)
- NICHD will assess relevance to our scientific mission
- Cover Letter Component: Request Institute and review group
- Center for Scientific Review (CSR) assigns to an Institute
- Applications may receive secondary assignment
- Applications are assigned to CSR or NICHD review group



Application Receipt Dates

<u>Grant Mechanism</u>	<u>Cycle I</u>	<u>Cycle II</u>	<u>Cycle III</u>
R01, U01 (new) (Renewal/resubmission)	Feb 5 Mar 5	Jun 5 Jul 5	Oct 5 Nov 5
R03, R21 (new) (resubmission)	Feb 16 Mar 16	Jun 16 Jul 16	Oct 16 Nov 16
K series (new) (resubmission)	Feb 12 Mar 12	Jun 12 Jul 12	Oct 12 Nov 12
F31, F32 (new, resubmission)	Apr 8	Aug 8	Dec 8
Diversity F31 (new, resubmission)	Apr 13	Aug 13	Dec 13
T32 (new, resubmission)	May 25 (most ICs, including NICHD)		

Review Date	Jun-Jul	Oct-Nov	Feb-Mar
Advisory Council	Sept-Oct	Jan-Feb	May-Jun
Earliest start date	Dec	Apr	Jul

<http://grants.nih.gov/grants/funding/submissionschedule.htm>



NIH LOAN REPAYMENT PROGRAMS



NIH Loan Repayment Programs

National Institutes of Health
US Dept of Health and Human Services

www.LRP.nih.gov





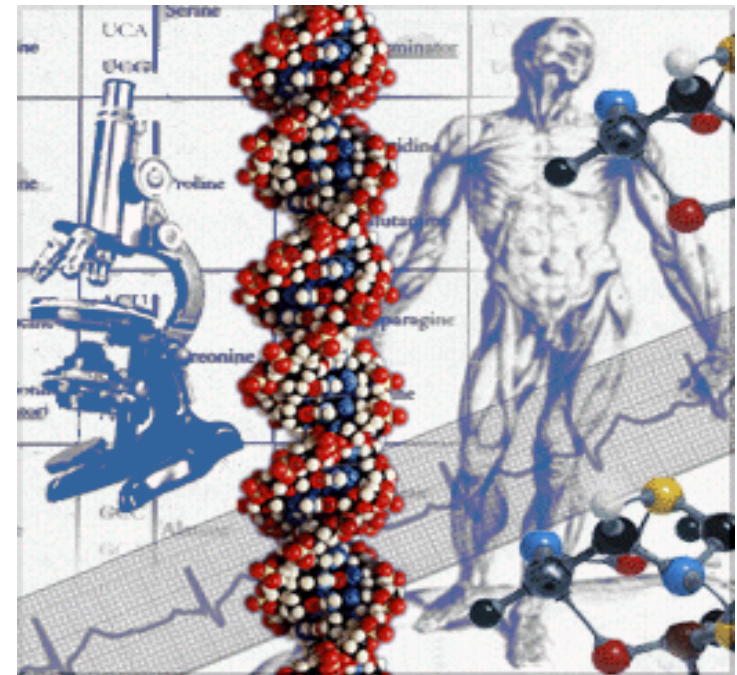
Extramural Loan Repayment Programs

NIH: Repays 25% of qualified debt per year up to a maximum of \$35,000 and covers the resulting taxes; Debt must exceed 20% of base salary.

Qualifying research areas:

- Clinical Research LRP (L30)
- Pediatric Research LRP (L40)
- Contraception & Infertility Research LRP (L50)
- Health Disparities Research LRP
- Clinical Research LRP for Individuals from Disadvantaged Backgrounds

Application submission: Sept. 1 to Nov. 15



Funding: Sources of Guidance

- NIH Program Announcements (PAs, RFAs)
 - Purpose, eligibility, allowable costs, review criteria
 - Tables of IC-specific Information, Requirements, & Staff Contacts
- www.nih.gov (follow links to “training” or “peer review”)
 - Office of Extramural Research (“OER” grant programs, forms)
 - Center for Scientific Review: www.csr.nih.gov (review process)
 - Institute web sites: www.nichd.nih.gov (program interests)
- Mentor (current and/or proposed)
- Department Chair or Administrator
- University/School Sponsored Programs Office
- Other colleagues & faculty
- NIH Program Staff (before applying and after review) !!

Thank You !

NICHD Training Contact:

Dennis A. Twombly, Ph.D.

NICHD Training Officer

Phone: (301) 451-3371

Email: dtwombly@mail.nih.gov

NICHD Website: <http://www.nichd.nih.gov/>

NIH Website: <http://www.nih.gov>

