



# Obtaining an NIH Animal Assurance



Dr. Linda Rueckert  
Northeastern Illinois University



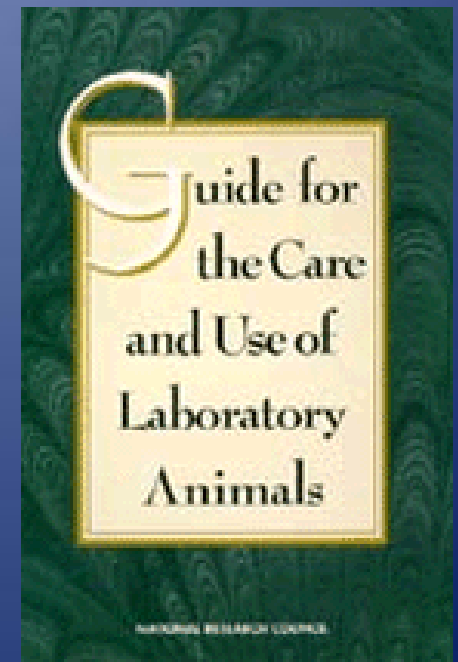
# Steps

- Proposal is selected for funding
- Some one at NIH (grants management?) contacts OLAW
- OLAW contacts your institution (OSP?), asks you to submit an Animal Assurance
- Download Sample Animal Welfare Assurance from OLAW web site
- Fill in and submit Assurance document to OLAW
- They may ask for clarification
- Resubmit
- OLAW approves, issues Animal Assurance number
- Funds are released



# Tips

- Use an approved Assurance from an institution similar to your own as a guide.
- Most of the document will be written by the Chair of the Institutional Animal Care and Use Committee (IACUC).
- All procedures must adhere to the “Guide for the Care and Use of Laboratory Animals” available from OLAW web site.





# Parts of the Assurance

- I. Applicability
- II. Institutional Commitment
- III. Institutional Program for Animal Care and Use
- IV. Institutional Program Evaluation and Accreditation
- V. Record Keeping Requirements
- VI. Reporting Requirements
- VII. Institutional Endorsement and PHS Approval
- VIII. Membership of the IACUC
- IX. Facilities and Species Inventory



# Institutional Program for Animal Care and Use

- Lines of authority: IACUC and veterinarian report directory to the Institutional Official (IO).
- Veterinarian must make at least 2 on-site visits per year.
- IACUC will review the animal care program at least once every 6 months.
- IACUC will inspect all animal facilities every 6 mos.
- IACUC will submit semiannual reports to IO.
- IACUC will review all PHS-supported activities involving animals; describe review process in detail.
- Occupational health and safety program.
- Training for animal workers.



# IACUC Membership

- At least 5 members
- 1 veterinarian
- 1 scientist
- 1 nonscientist
- 1 person not affiliated with your institution



# Occupational Health and Safety Program

- Applies to everyone who works with the animals (investigators, staff, students).
- Involve a Health and Safety Professional.
- All workers must have a health evaluation.
- Worker training: CITI
- Health and safety guidelines
  - Bites and scratches: tetanus
  - Allergies
  - Chemicals



# Institutional Program Evaluation and Accreditation

- Category 1: Accredited by the Association for Assessment and Accreditation of Laboratory Animal Care, International (AAALAC)
- Category 2: Not accredited by AAALAC
  - Facilities must be evaluated by IACUC every 6 mos.
  - Semiannual reports submitted to the Institutional Official





# Reporting Requirements

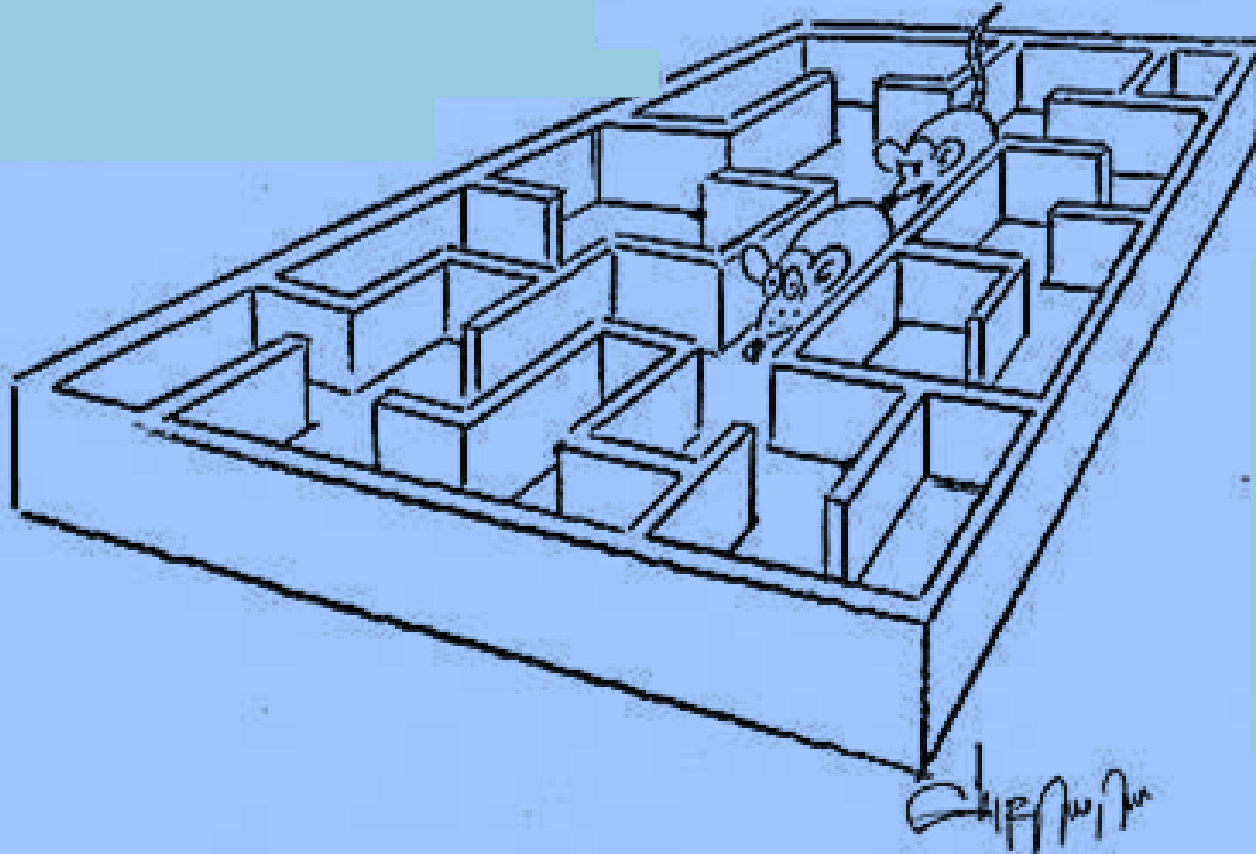
- Annual report must be submitted to OLAW
- Proper format can be found on OLAW web site



# Useful Web Sites

- OLAW: <http://grants.nih.gov/grants/olaw/>
- Collaborative Institutional Training Initiative (CITI):  
<http://www.citiprogram.org>

# Any Questions?



'Oh no, Mr. Know-it-all isn't going to stop and ask for directions!  
Admit it - we're lost.'