



NCCIH Strategic priorities: Whole person health

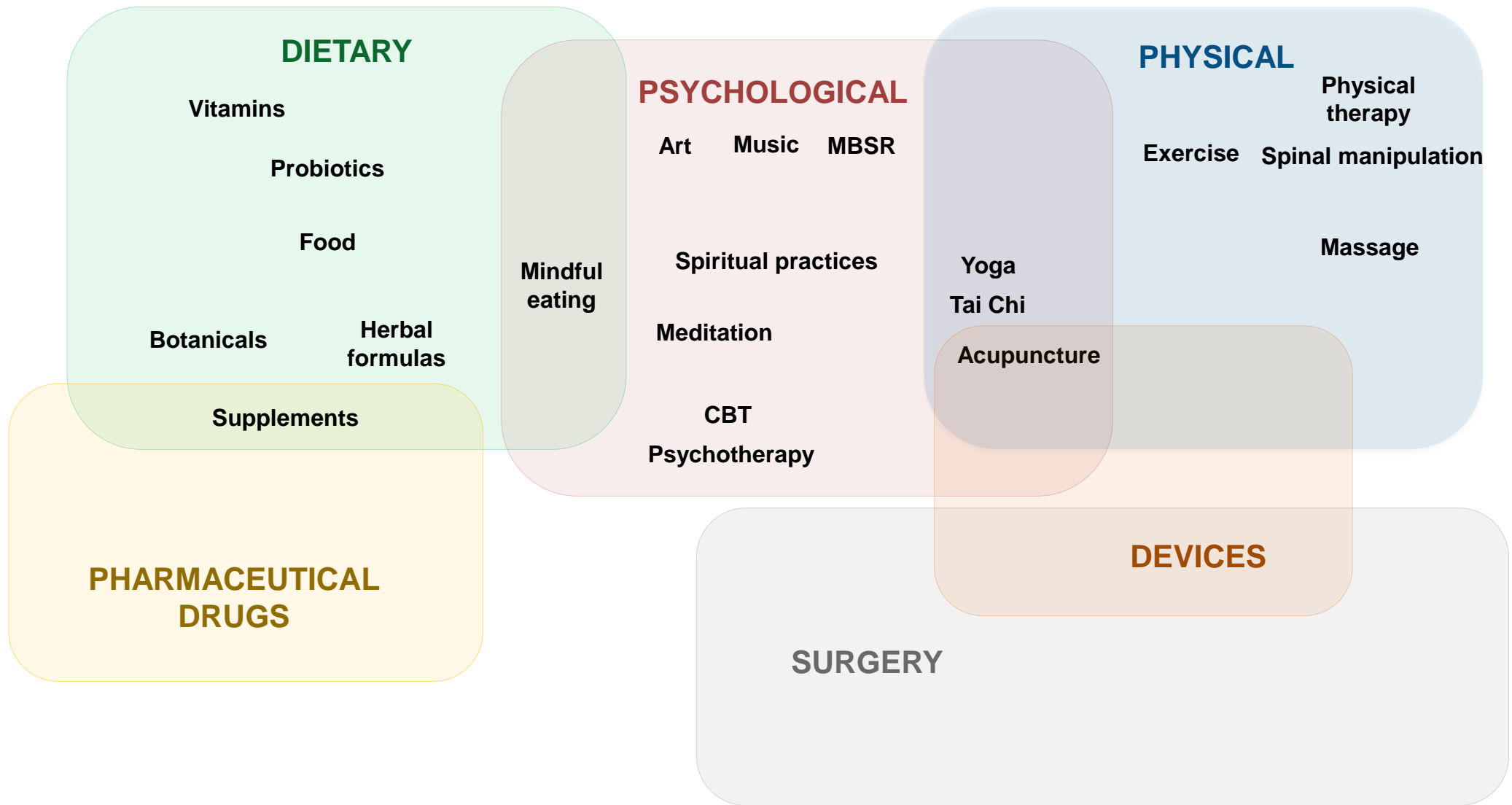
Helene Langevin, M.D., Director, NCCIH



Includes **complementary** therapies and practices that use dietary, physical and psychological approaches

N C C I H





N C C I H

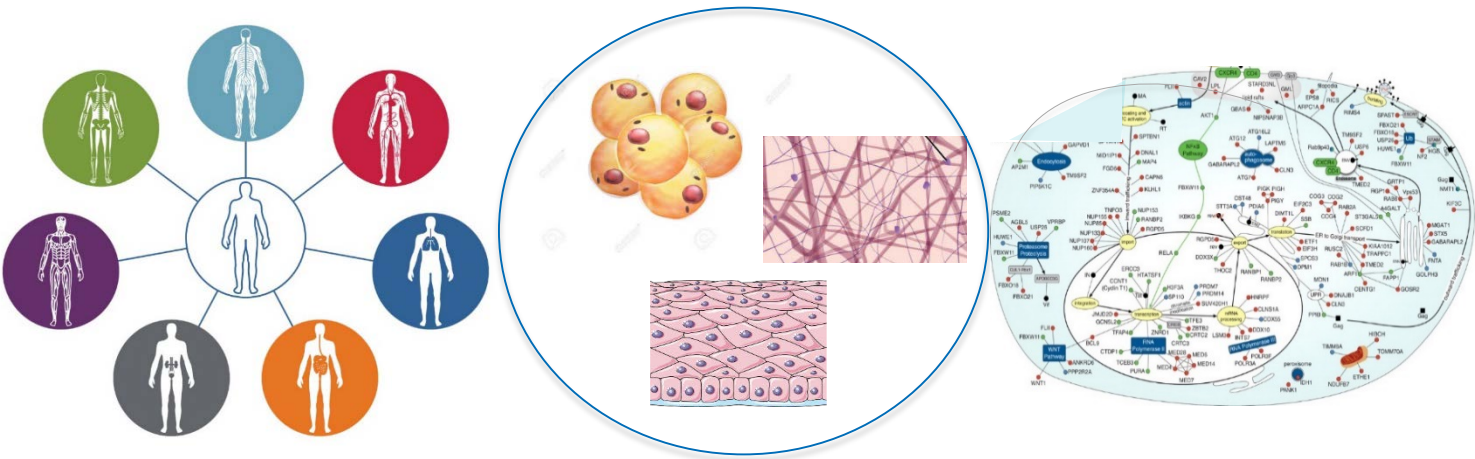
Supports **integrative** research on whole person health







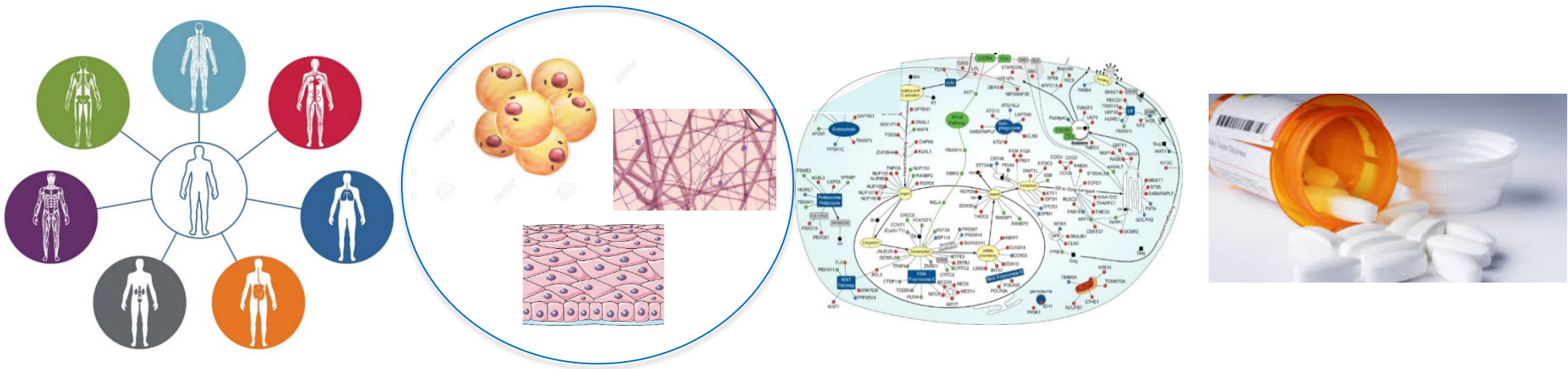
ANALYSIS



SYNTHESIS INTEGRATION



ANALYSIS



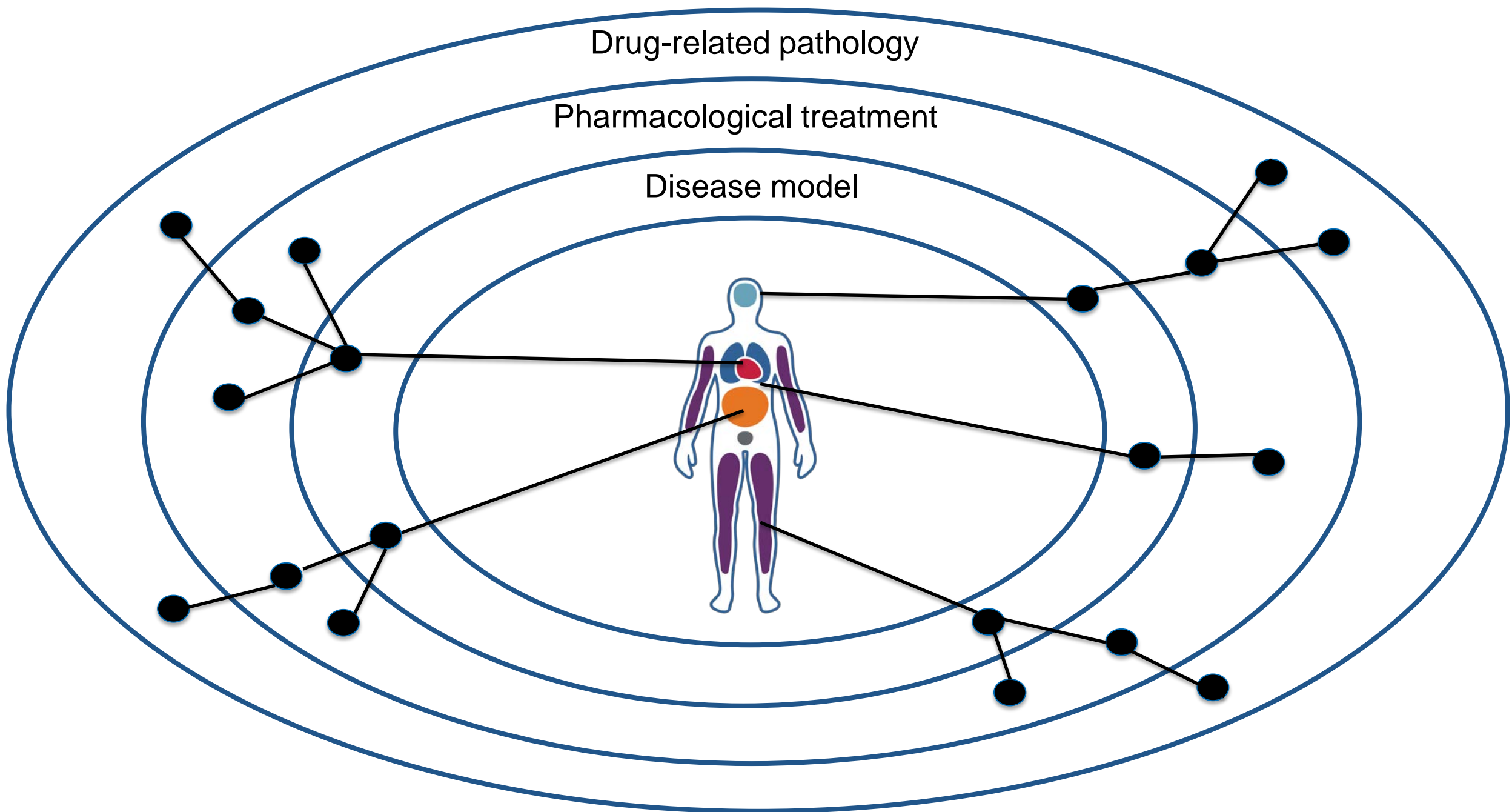
SYNTHESIS INTEGRATION



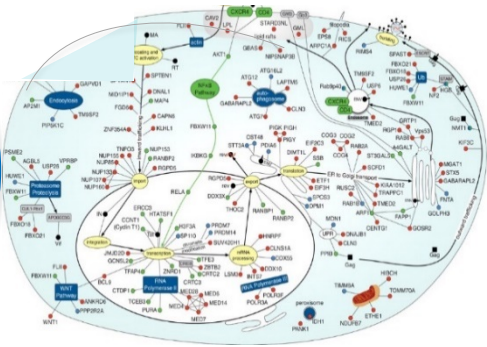
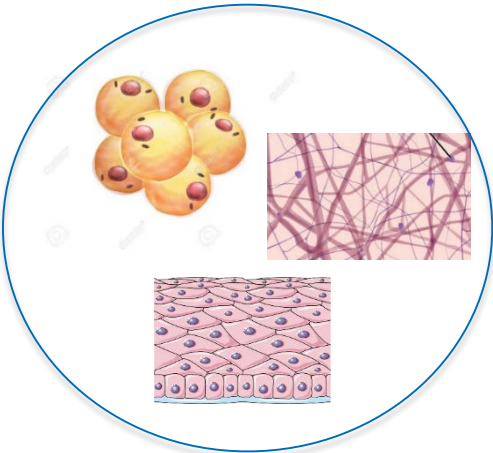
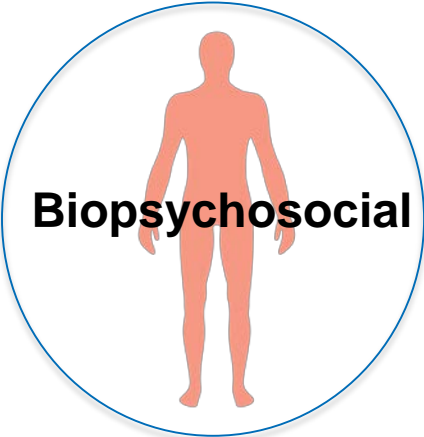
Drug-related pathology

Pharmacological treatment

Disease model



ANALYSIS



SYNTHESIS INTEGRATION



N

C

C

I

H

Addresses **health** promotion and restoration, disease prevention and symptom management





HEALTH



DISEASE





HEALTH

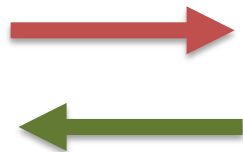


DISEASE

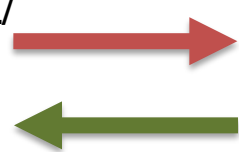




HEALTH



ENVIRONMENTAL/
BEHAVIORAL
DYSFUNCTION



PRE-DISEASE



DISEASE





HEALTH

ENVIRONMENTAL/
BEHAVIORAL
DYSFUNCTION

PRE-DISEASE

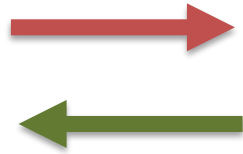
DISEASE

Healthy diet

Poor diet

Weight gain
Pre-diabetes
Hyperlipidemia

Obesity
Diabetes
Cardiovascular disease





HEALTH

ENVIRONMENTAL/
BEHAVIORAL
DYSFUNCTION

PRE-DISEASE

DISEASE

Healthy diet

Poor diet

Weight gain
Pre-diabetes
Hyperlipidemia

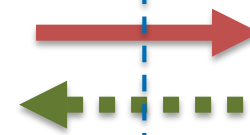
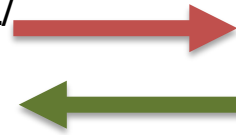
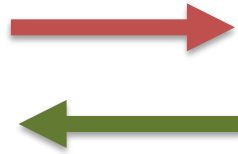
Obesity
Diabetes
Cardiovascular disease

Active lifestyle

Sedentary lifestyle
Poor posture

Chronic
musculoskeletal pain

Degenerative
joint/disc disease





HEALTH

ENVIRONMENTAL/
BEHAVIORAL
DYSFUNCTION

PRE-DISEASE

DISEASE

Healthy diet

Poor diet

Weight gain
Pre-diabetes
Hyperlipidemia

Obesity
Diabetes
Cardiovascular disease

Active lifestyle

Sedentary lifestyle
Poor posture

Chronic
musculoskeletal pain

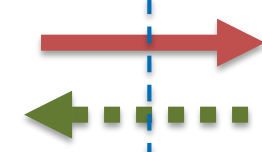
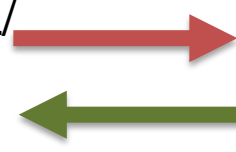
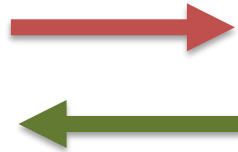
Degenerative
joint/disc disease

Restorative
sleep

Psychological stress
Poor sleep habits

Chronic sympathetic activation
Insomnia

Cognitive decline
Depression





HEALTH

ENVIRONMENTAL/
BEHAVIORAL
DYSFUNCTION

PRE-DISEASE

DISEASE

Healthy diet

Poor diet

Weight gain
Pre-diabetes
Hyperlipidemia

Obesity
Diabetes
Cardiovascular disease

Active lifestyle

Sedentary lifestyle
Poor posture

Chronic
musculoskeletal pain

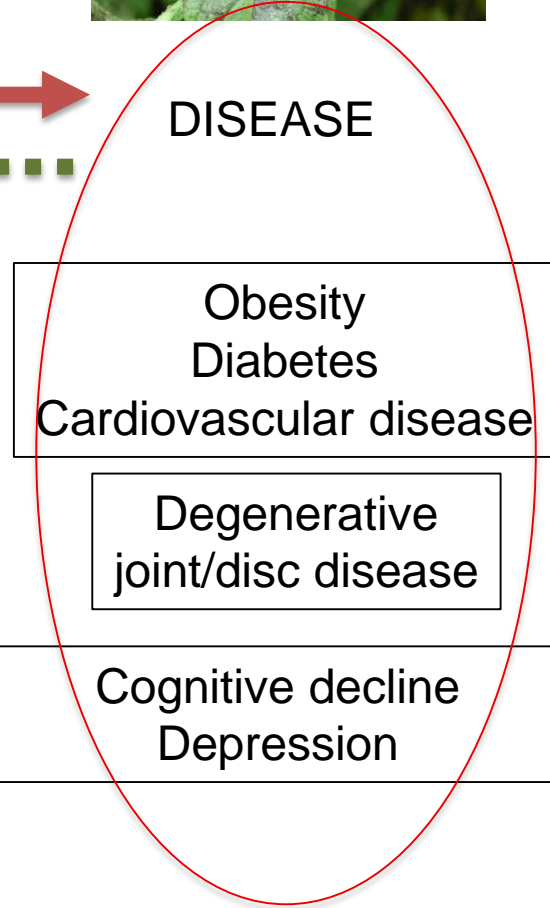
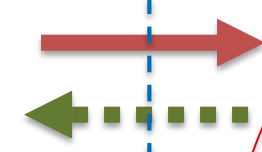
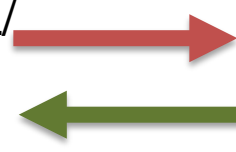
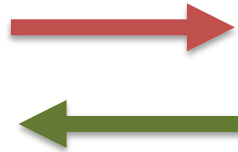
Degenerative
joint/disc disease

Restorative
sleep

Psychological stress
Poor sleep habits

Chronic sympathetic activation
Insomnia

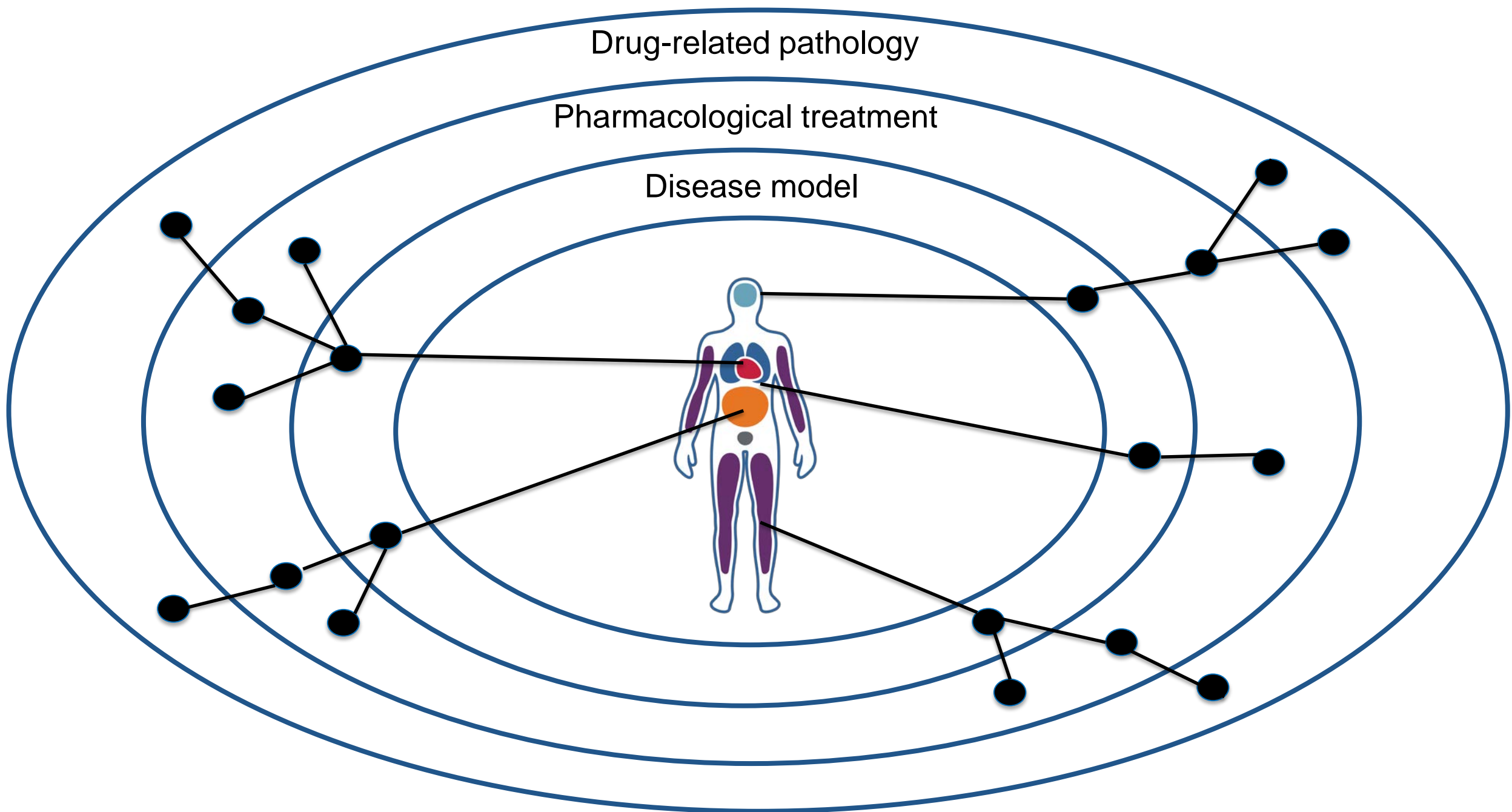
Cognitive decline
Depression



Drug-related pathology

Pharmacological treatment

Disease model





HEALTH

ENVIRONMENTAL/
BEHAVIORAL
DYSFUNCTION

PRE-DISEASE

DISEASE

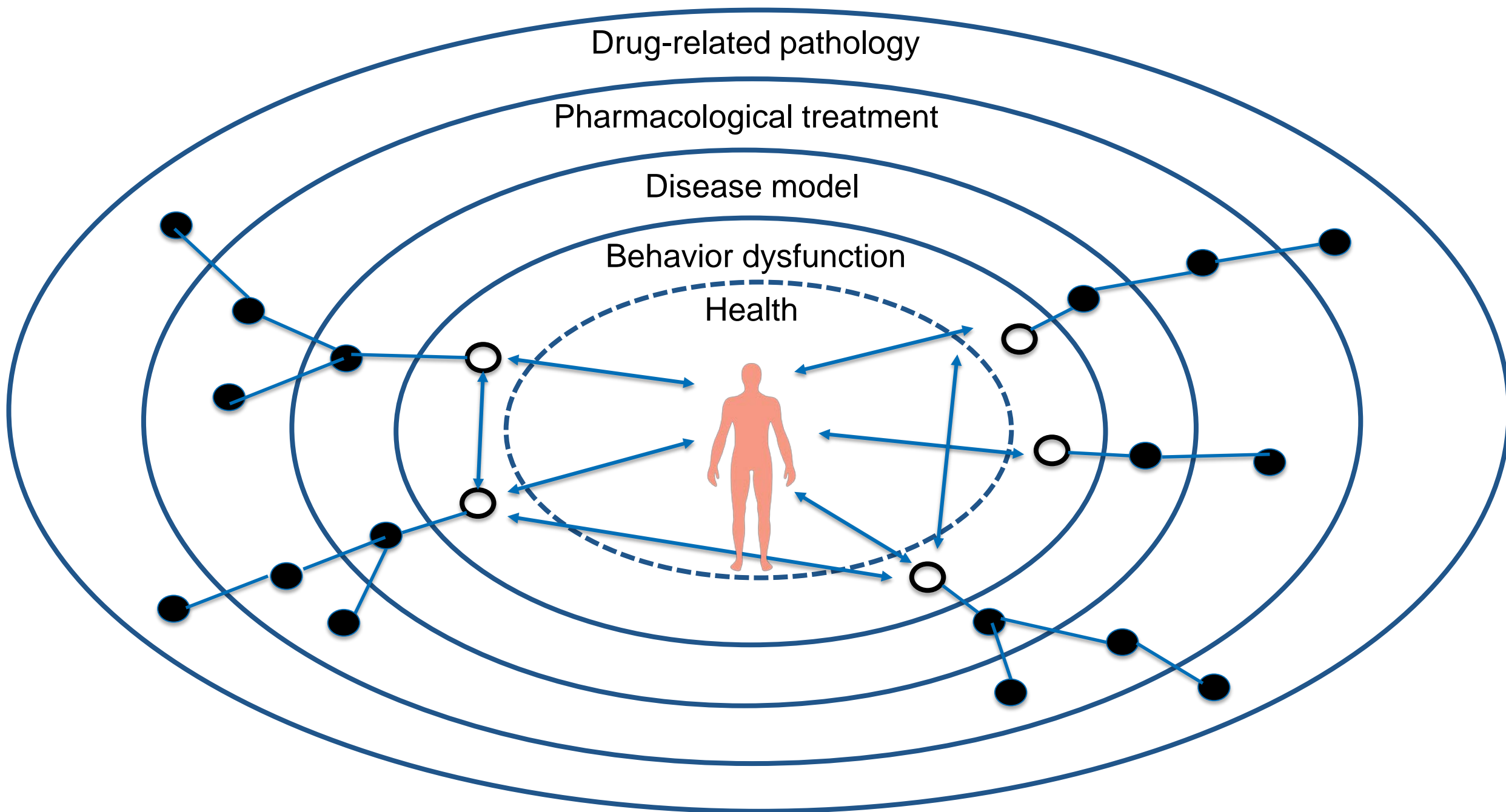
Healthy diet
Active lifestyle
Restorative sleep

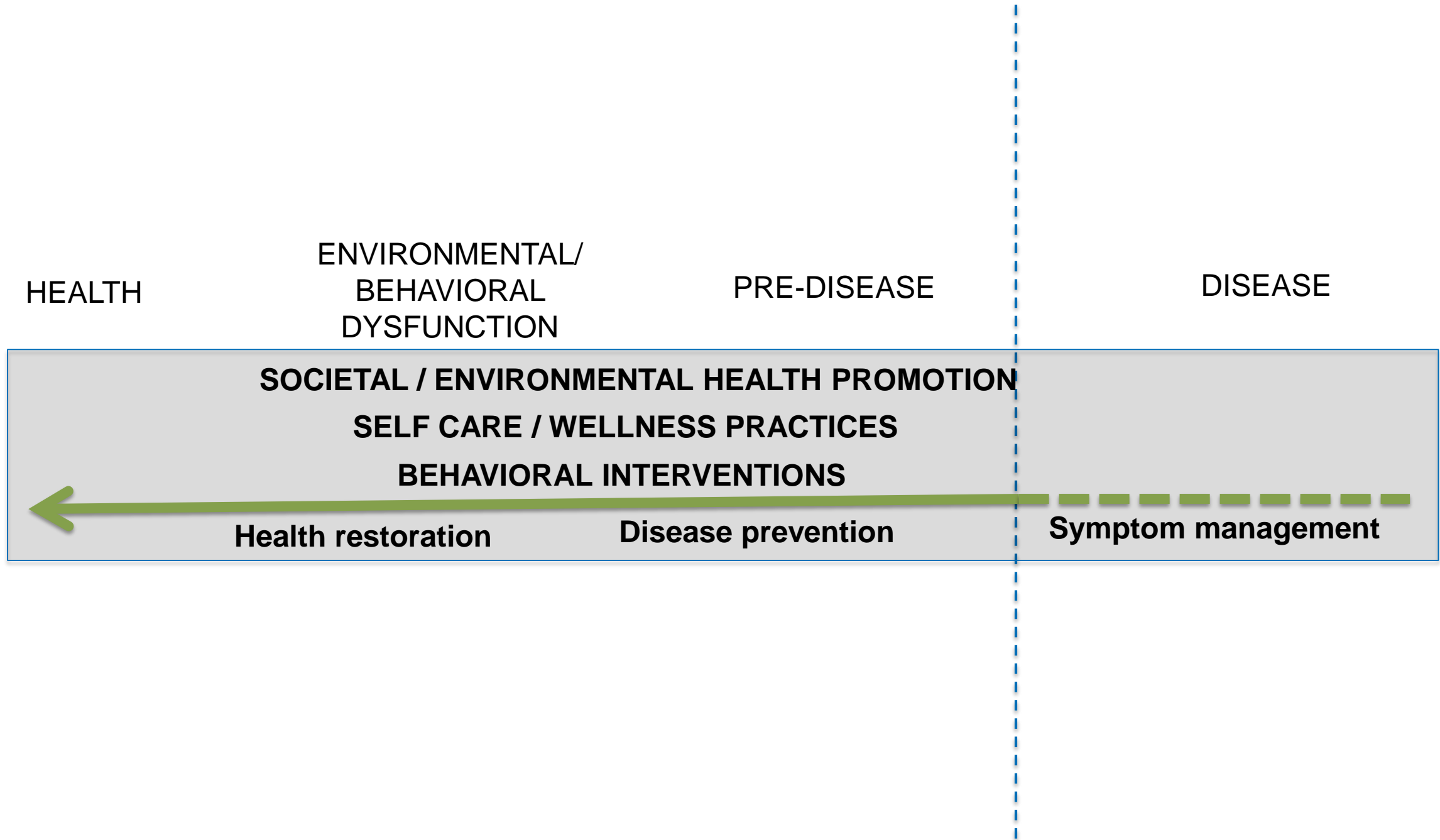
Poor diet
Sedentary lifestyle
Poor posture
Psychological stress
Poor sleep habits

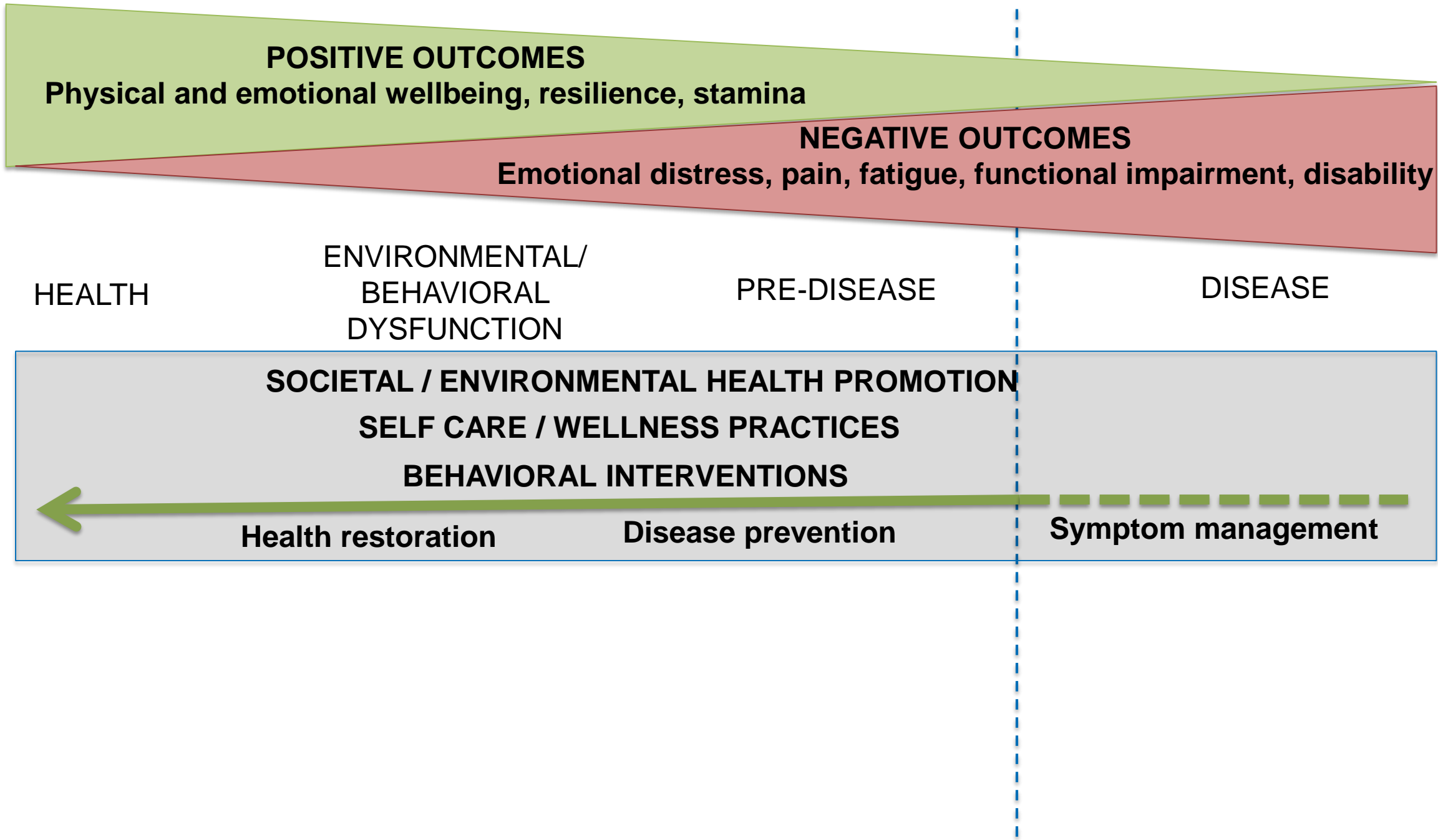
Weight gain
Pre-diabetes
Hyperlipidemia
Chronic musculoskeletal pain
Chronic sympathetic activation
Insomnia

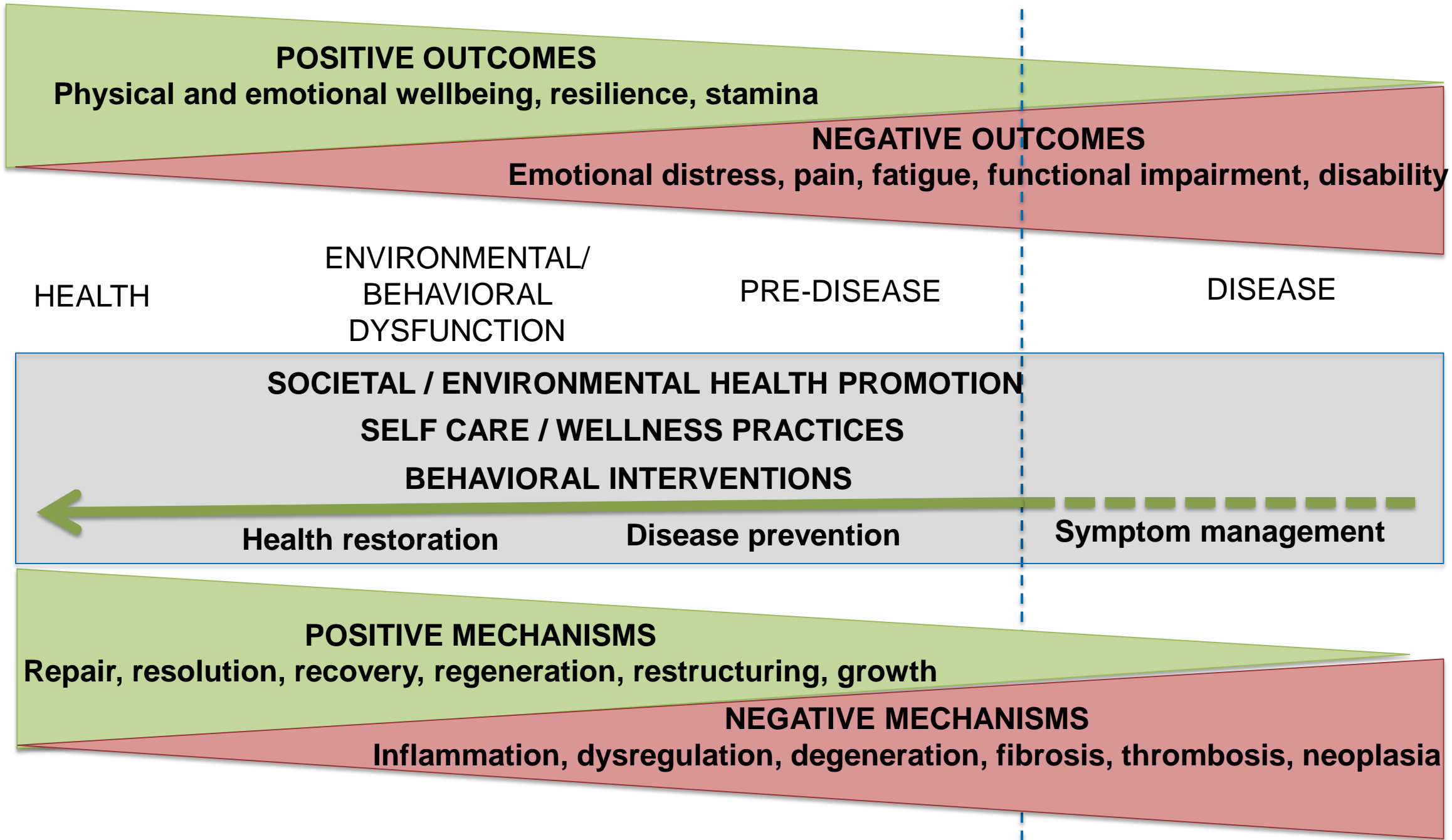
Obesity
Diabetes
Cardiovascular disease
Degenerative joint/disc
disease
Cognitive decline
Depression











N C C I H

Includes **complementary** therapies and practices that use dietary, physical and psychological approaches

Addresses **health** promotion and restoration, disease prevention and symptom management

Supports **integrative** research on whole person health

