

# DIRECTOR'S REPORT



**Alan E. Guttmacher, M.D.**  
**Director**

***Eunice Kennedy Shriver* National Institute of  
Child Health and Human Development**

**January 26, 2012**



# What's To Come



- News from NICHD
- News from NIH
- FY 2012 extramural guidance
- Awards and recognition
- Legislative and budget updates
- Recent research advances

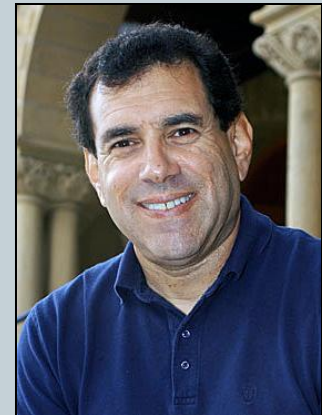
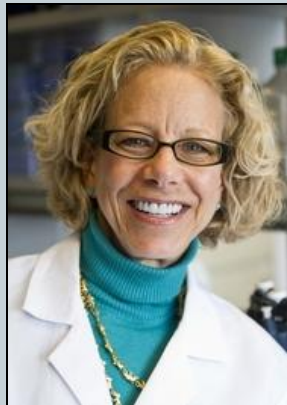
# News from NICHD



# New Council Members to Join in June



- **Diana Bianchi, M.D.**, Tufts School of Medicine
- **Bonnie Duran, Dr.PH.**, University of Washington
- **Ken Muneoka, Ph.D.**, Tulane University
- **Paul Wise, M.D., MPH**, Stanford University



# NICHD Celebrates 50 Years!



# NICHD's Scientific Vision



- The vision statement is now being finalized.
- Negotiations regarding publication are under way with several leading journals.
- Stay tuned!



# New Blue Ribbon Panel to Review Division of Intramural Research

- Blue ribbon panel established to review NICHD's Division of Intramural Research and advise NICHD and NIH leadership on the future course of DIR



- Chaired by **Jeff Murray, M.D.**, of the University of Iowa



- BSC Chair **Louis Muglia, M.D., Ph.D.**, of Cincinnati Children's Hospital, serving ex officio
- Other members now being finalized

# Hirschfeld Named Director of NCS



- **Steven Hirschfeld, M.D., Ph.D.**, has been named Director of the National Children's Study; he previously served as Acting Director.
- Dr. Hirschfeld will also **continue in his role as NICHD's Associate Director for Clinical Research.**



# News from NIH



# Establishment of NCATS



- The 2012 appropriations bill includes funding for the new National Center for Advancing Translational Sciences (and also sunsetted NCRRT).
- NCATS is funded at \$576M, including up to \$10M for the Cures Acceleration Network (authorized in the Affordable Care Act but never previously funded).
- NIMH Director Thomas Insel and NIH Deputy Director Kathy Hudson are serving as Acting Director and Acting Deputy Director, respectively.



# Changes at NIGMS

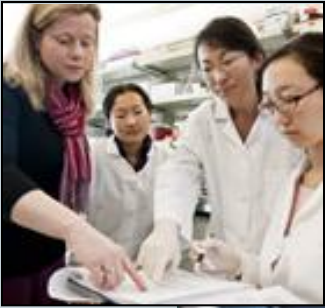


- **Chris Kaiser, Ph.D.**, has been named the new Director of the National Institute of General Medical Sciences (NIGMS), to begin in Spring 2012. Kaiser comes to NIH from MIT, where he is Professor and Head of the Department of Biology. We are proud to note that his intramural research lab will reside in NICHD.

# Changes at NIGMS



- Two new divisions, merging programs transferred from NCRR with existing NIGMS programs



- Division of Training, Workforce Development, and Diversity
- Division of Biomedical Technology, Bioinformatics, and Computational Biology

<http://www.nigms.nih.gov/News/Results/20120104.htm>

# Changes at NIGMS



- Creation of a trans-NIH Office of Emergency Care Research (OECR) within NIGMS to foster basic, translational, and clinical research and research training for the emergency setting
- Plays a coordinating role; no separate funding authority
- Acting Director is NINDS Deputy Director, Walter Koroshetz
- NICHD Director is one of four members of OECR Steering Committee



# FY 2012 Extramural Guidance



# FY 2012 NIH Fiscal Policy for Grants



- No inflationary increases for non-competing awards this FY, or for any out-years of awards issued this FY, though adjustments for special needs (e.g., equipment, added personnel) may be accommodated
- Efforts to keep average size of grants at FY 2011 levels or lower

<http://grants.nih.gov/grants/guide/notice-files/NOT-OD-12-036.html>

# NIH Fiscal Policy, cont.



- Kirschstein National Research Service Awards get 2% increase at all stipend levels. The tuition and fees, training-related expenses for trainees, and the institutional allowance for individual fellows remain unchanged.
- Continued efforts to support new investigators on R01 equivalent applications at same success rates as established PIs

<http://grants.nih.gov/grants/guide/notice-files/NOT-OD-12-036.html>

# FY 2012 Salary Limitations



- FY 2012 appropriations legislation caps funding for salaries of grant, contract, and cooperative agreement awardees at Executive Level II of the Federal Executive Pay Scale (i.e., \$179,700).
- Applies to FY 2012 grant awards issued on or after Dec. 23; those issued before remain at Executive Level I levels (\$199,700), although out-years for those awards will be adjusted to the lower level.

<http://grants.nih.gov/grants/guide/notice-files/NOT-OD-12-035.html>

# Awards and Recognition



# Grantees Awarded National Medal of Science



- **Ralph Brinster, V.M.D., Ph.D.**  
*University of Pennsylvania*

For contributions to the development and use of transgenic mice



- **Rudolf Jaenisch, M.D.**  
*Massachusetts Institute of Technology*

For contributions to the understanding of the epigenetic mechanism of gene expression



# Grantee Wins National Mentoring Award



- **Teresa Woodruff, Ph.D.,**  
*Northwestern University  
Feinberg School of Medicine*  
Received the Presidential  
Award for Excellence in  
Science, Mathematics, and  
Engineering Mentoring





# Fogarty's Director Honored



- **Roger Glass, M.D., Ph.D.,** Director of NIH's Fogarty International Center – named winner of the 2012 Programme for Global Paediatric Research Award for Outstanding Contributions to Global Child Health

# USAID Honors “Helping Babies Breathe”

- USAID selected Helping Babies Breathe as the winner of the 2011 Global Development Alliance Excellence Award.
- HBB is a collaboration among NICHD, USAID, the American Academy of Pediatrics, the Laerdal Foundation, and Save the Children.



# Friends and Current Grantees Elected to IOM



- **W. Thomas Boyce, M.D.**, University of British Columbia
- **John Chae, M.D., M.E.**, Case Western Reserve University
- **Diana Farmer, M.D.**, University of California, Davis
- **Margaret Fuller, Ph.D.**, Stanford University School of Medicine



*Continued...*

# IOM Members, cont.



- **Daniel Geschwind, M.D., Ph.D.**, David Geffen School of Medicine at UCLA
- **Jonathan Gitlin, M.D.**, Vanderbilt University School of Medicine
- **Jennifer Howse, Ph.D.**, March of Dimes
- **Claire Pomeroy, M.D., M.B.A.**, University of California, Davis School of Medicine
- **James Smith, Ph.D.**, RAND Corporation

# Legislative and Budget Updates



# Reauthorization of SBIR/STTR Programs



- After many extensions, the SBIR/STTR programs were reauthorized for six years in **DoD's** reauthorization legislation. Changes include:
  - SBIR set-aside to increase in regular increments from 2.5% in FY11 to 3.2% in FY17, and STTR set-asides from 0.3% to 0.45%. (Puts FY12 levels at 2.6% for SBIR, 0.35% for STTR)
  - For the first time, the NIH, Dept. of Energy, and NSF may award up to 25% of SBIR funds to venture capital companies, hedge funds, or private equity firms.
  - Codifies the ability of agencies to apply for waivers to exceed **the “hard cap” on awards (\$225K for Phase I awards, \$1.5M for Phase II awards)**.

# Best Pharmaceuticals for Children Act



- BPCA sunsets in October, with rest of the Prescription Drugs User Fees Act. Loss of those fees would reduce the FDA review budget by 60%, so many **see this as one of few “must-pass”** pieces of legislation this year.
- Other important provisions: reauthorization of the Pediatric Research Equity Act (requiring pharmaceutical companies to submit new drug applications that include pediatric data) and the Pediatric Medical Devices Act.

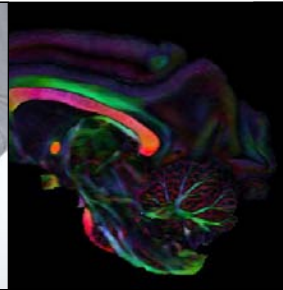
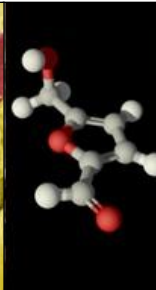
# Budget



- NIH's total appropriation in FY12 = \$30.7B, nearly identical to FY11's appropriation. However, a 0.189% rescission for all Labor/HHS appropriations reduced NIH's appropriation to **\$30.63B**.
- NICHD's FY12 appropriation = **\$1.32B** (+.3% from FY11, after rescissions).

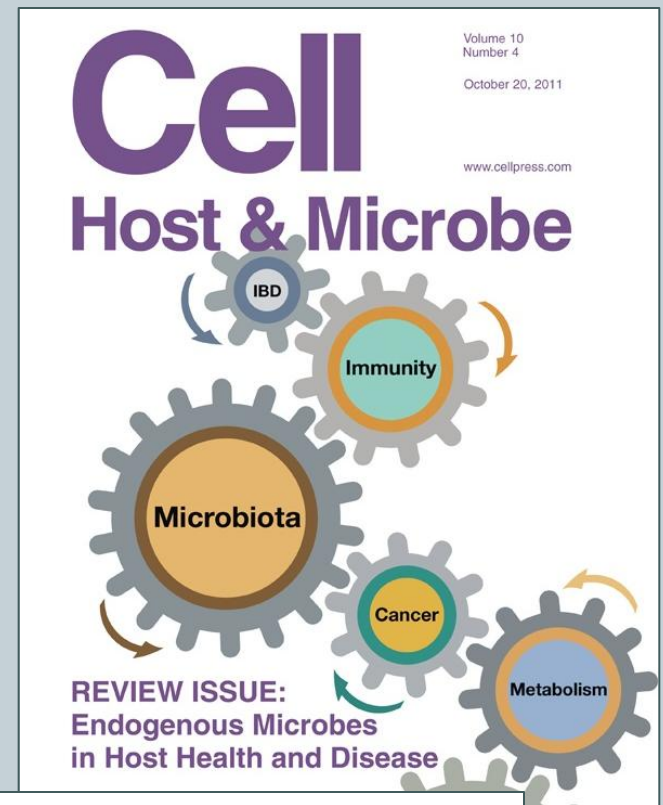


# Recent Research Advances



# Let's Hear from Staff

- **Leonid Margolis, Ph.D.:**  
Anti-HIV drug acts to block herpes virus
- **Enrique Schisterman, Ph.D.:**  
BioCycle Study: Caffeinated beverage intake and reproductive hormones among premenopausal women
- **Regina James, M.D.:**  
Launch of the Jackson Heart Kids Study



 The American Journal of  
**CLINICAL NUTRITION**

Thank You!

