

Discussion of NICHD's Proposed Reorganization Plans

Alan E. Guttmacher, M.D.
Director

Eunice Kennedy Shriver National Institute of
Child Health and Human Development

January 26, 2012



Underlying Principles

- Form follows function
- Designed for science of the next decade
 - Informed by NICHD scientific visioning process
- It's all about the science, not individuals
 - Effective even when staff members change
- Maximize opportunities for interdisciplinary work – “de-siloing”
- Maximize clarity to the external community

Current Organization

NICHD Office of the Director

Office of Administrative Management
Office of Extramural Policy
Office of Global Health Research &
International Activities
Office of Program and Public Liaison

Office of Science Policy, Analysis, and Communication
Office of Committee Management
National Children's Study Program Office
Obesity Research Strategic Core

Advisory
Boards*

Division of
Intramural Research

Division of
Epidemiology,
Statistics, and
Prevention Research

Division of Special
Populations

Division of Scientific
Review

Center for
Population Research

Center for
Developmental
Biology & Perinatal
Medicine

Center for Research
for Mothers and
Children

National Center for
Medical
Rehabilitation
Research

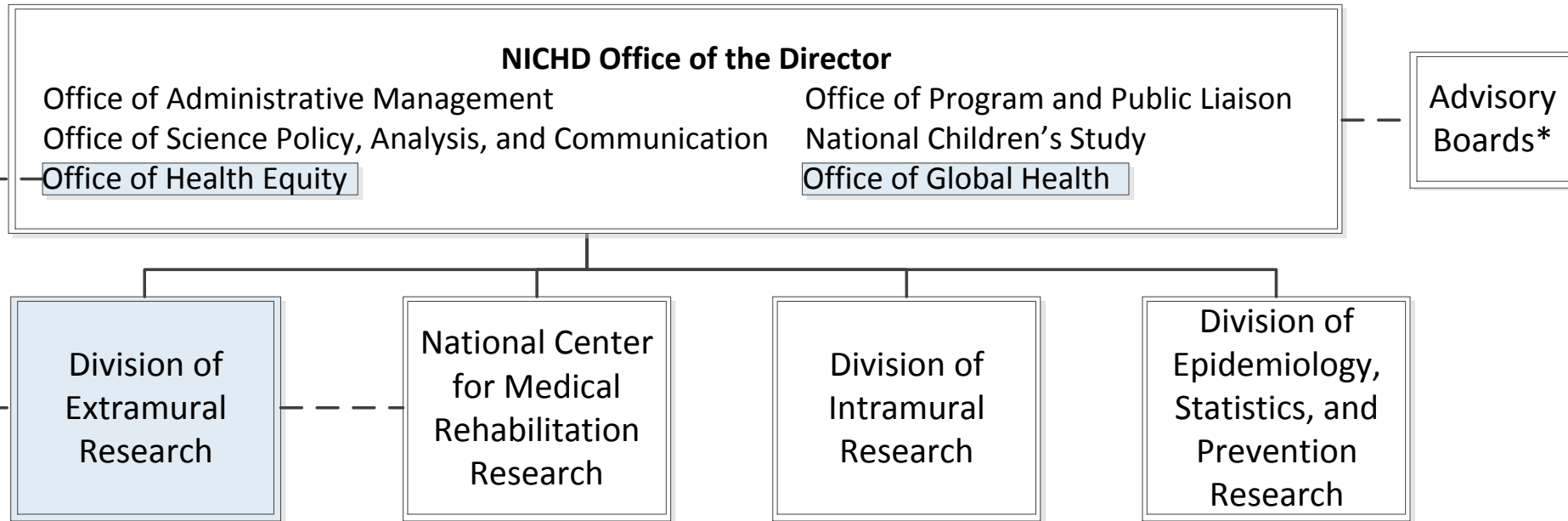
*National Advisory Child Health and Human Development Council
National Advisory Board on Medical Rehabilitation Research
National Children's Study Federal Advisory Committee
Board of Scientific Counselors

Current Organization



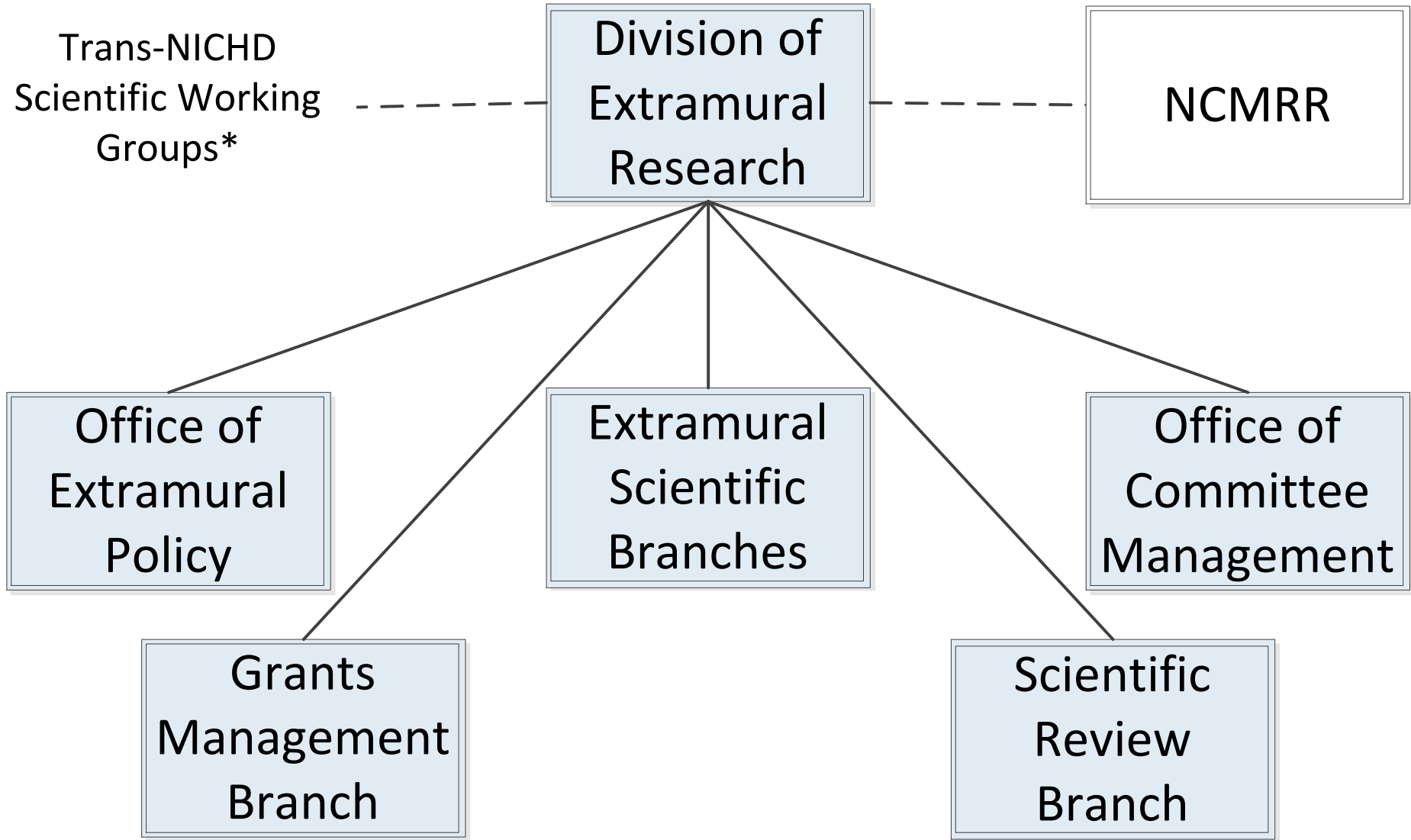
*National Advisory Child Health and Human Development Council
National Advisory Board on Medical Rehabilitation Research
National Children's Study Federal Advisory Committee
Board of Scientific Counselors

Proposed NICHD Reorganization



*National Advisory Child Health and Human Development Council
National Advisory Board on Medical Rehabilitation Research
National Children's Study Federal Advisory Committee
Board of Scientific Counselors

Proposed Division of Extramural Research



* e.g., Clinical Research, Conduct of Science, DOHaD, Neuroscience, Nutrition, Obesity, etc.

Extramural Scientific Branches

Current	Proposed
Child Development and Behavior	Child Development and Behavior
Contraception and Reproductive Health	Contraceptive Discovery and Development
Demographic and Behavioral Sciences	Demography and Population Sciences
Developmental Biology, Genetics, and Teratology	Developmental Biology and Morphogenesis
Endocrinology, Nutrition, and Growth	Growth and Metabolism
Intellectual and Developmental Disabilities	Intellectual and Developmental Disabilities

Extramural Scientific Branches

Current	Proposed
Obstetric and Pediatric Pharmacology	Obstetric and Pediatric Pharmacology and Therapeutics
Pediatric, Adolescent, and Maternal AIDS	Pediatric, Adolescent, and Maternal Infectious Diseases
Pregnancy and Perinatology	Pregnancy and Perinatology
Reproductive Sciences	Fertility and Infertility
	Gynecologic Health and Disease
	Pediatric Injury Prevention and Critical Care

NCMRR Programs

Current

Behavioral Sciences and Rehabilitative Technologies

Biological Sciences and Career Development

Pediatric Critical Care and Rehabilitation

Spinal Cord and Musculoskeletal Disorders and Assistive Technology

Traumatic Brain Injury and Stroke Rehabilitation

Proposed *

Assistive Devices and Technology Development

Behavioral Sciences, Participation, and Health Services Research

Cognitive and Linguistic Rehabilitation

Plasticity, Adaptation, and the Lifespan Trajectory

Sensory, Motor, and Musculoskeletal Rehabilitation

* Preliminary; awaiting Blue Ribbon Panel report

Discussion

- Council
- Members of the public
- Feedback cards
- Second public meeting
- Email (through March 1st):
NICHDDirectorsOffice@mail.nih.gov