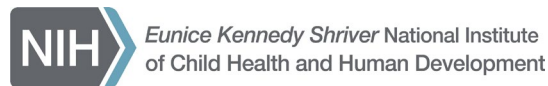


Overview of the NIH Grant System

Andrew A. Bremer, M.D., Ph.D.

Chief, Pediatric Growth and Nutrition Branch

Acting Chief, Pregnancy and Perinatology Branch



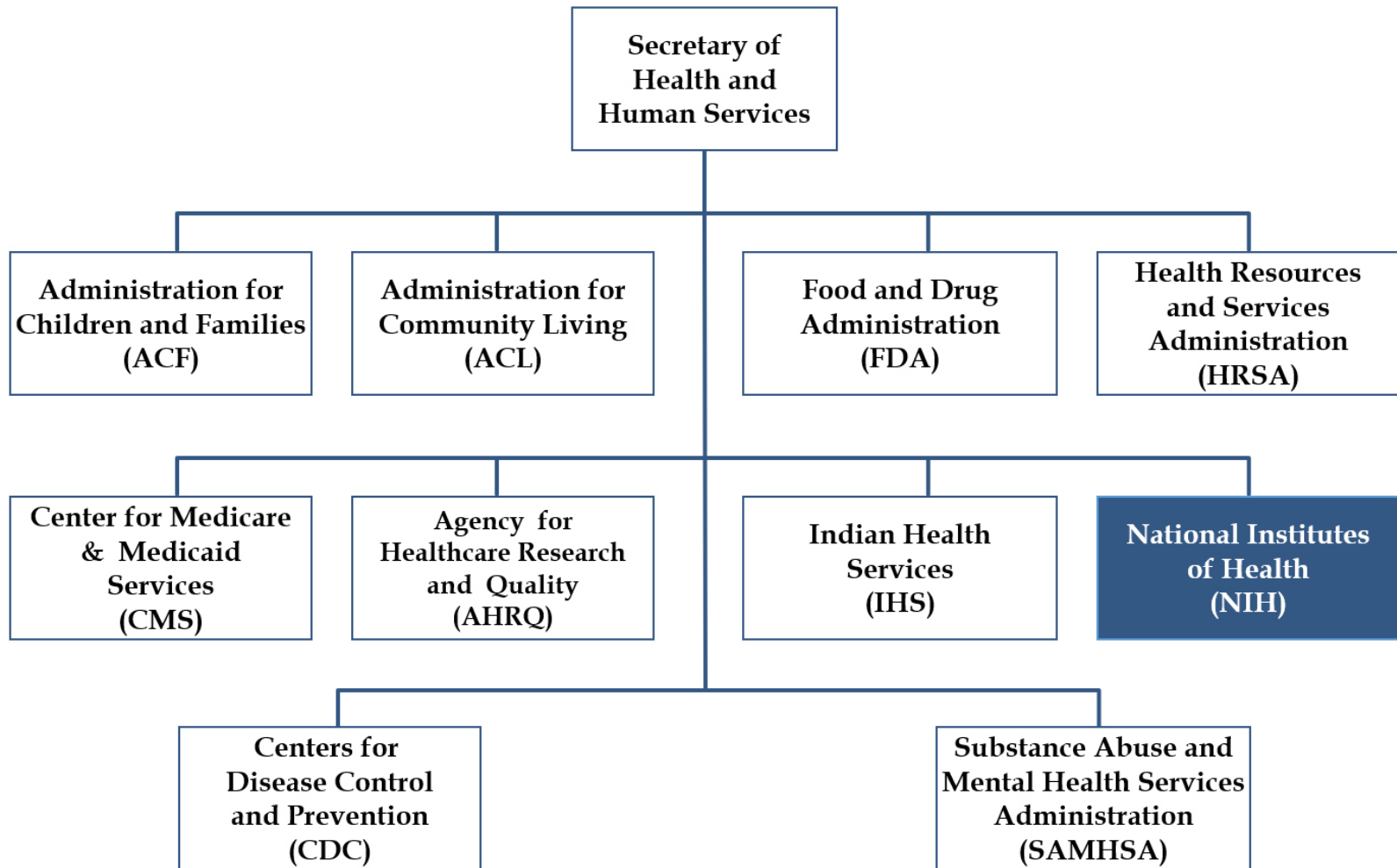
National Institutes of Health



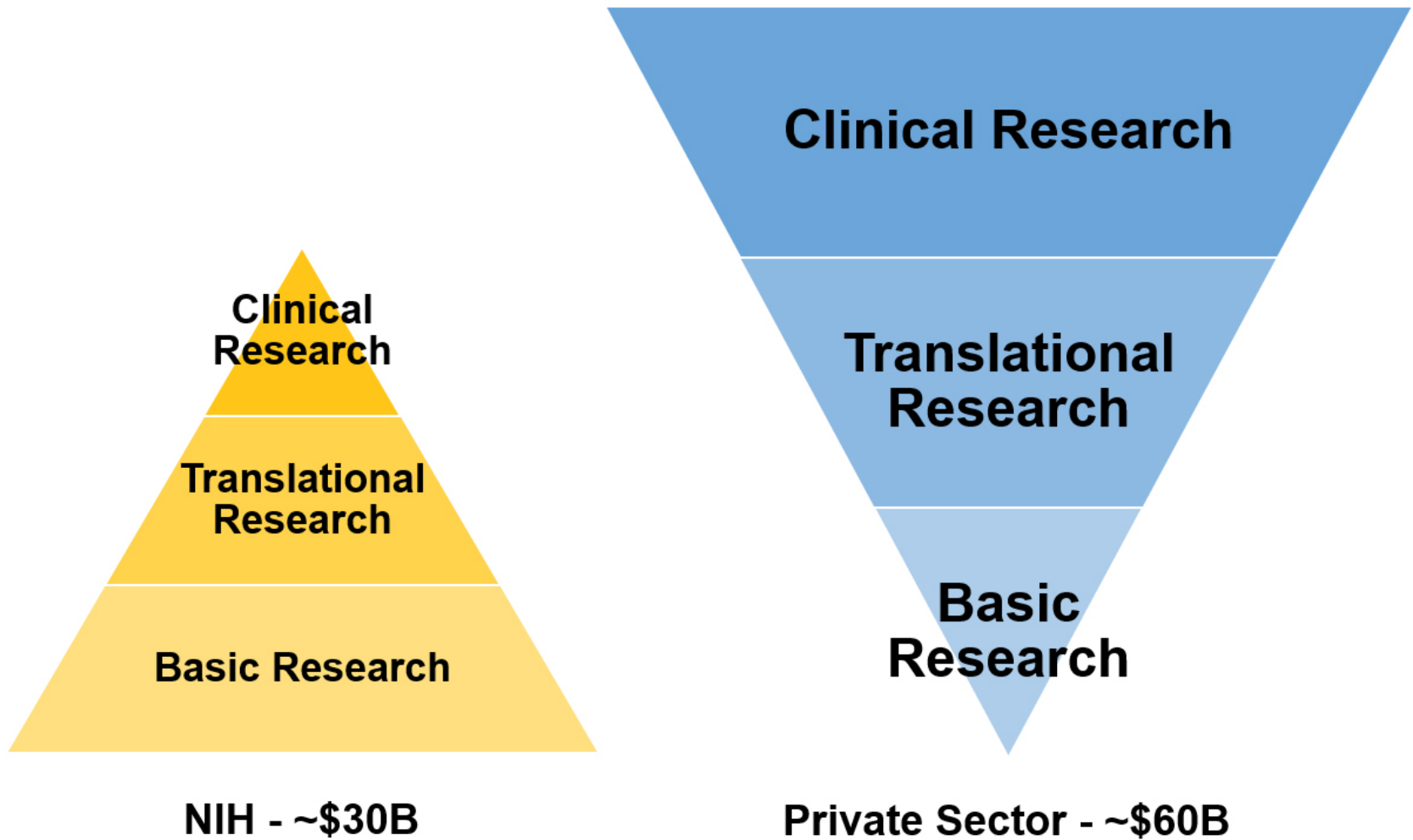
- Much of the biomedical research in the United States is supported by the Federal government, primarily the National Institutes of Health (NIH)
- One agency of 10 within the U.S. Department of Health and Human Services (HHS)
- Comprises 27 Institutes and Centers as well as Offices (ICOs)



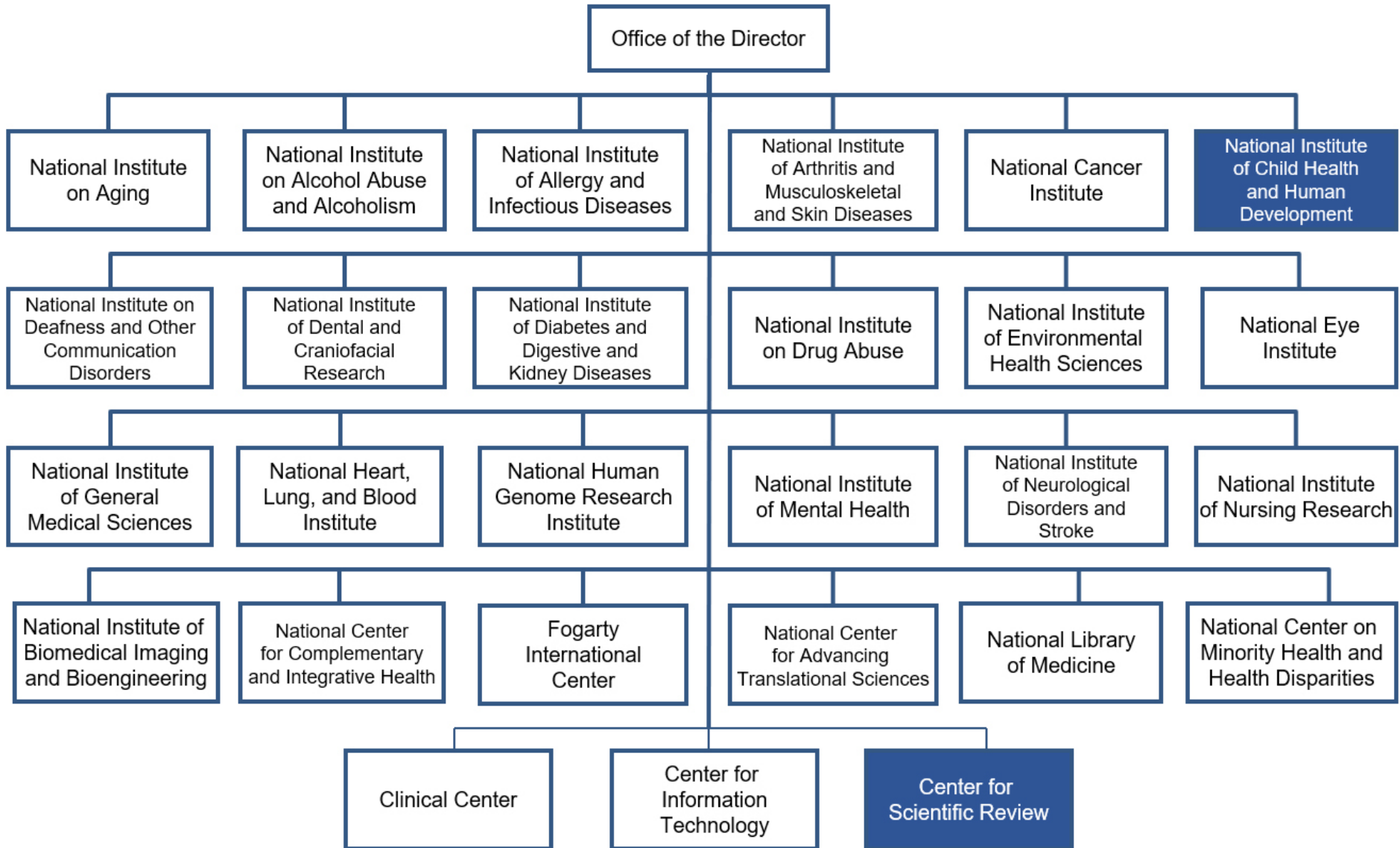
U.S. Dept. of Health and Human Services



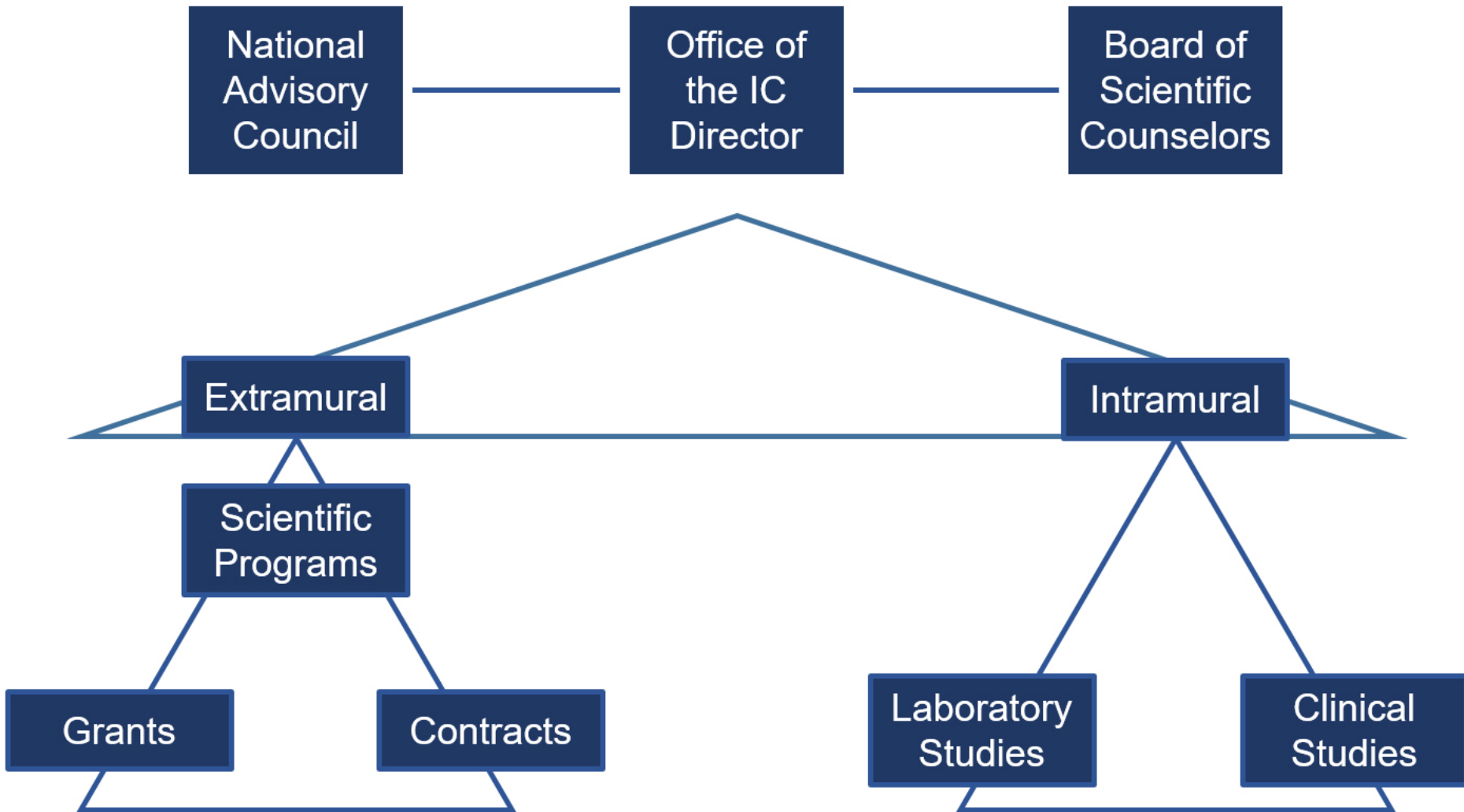
Balanced National Biomedical Research Portfolio



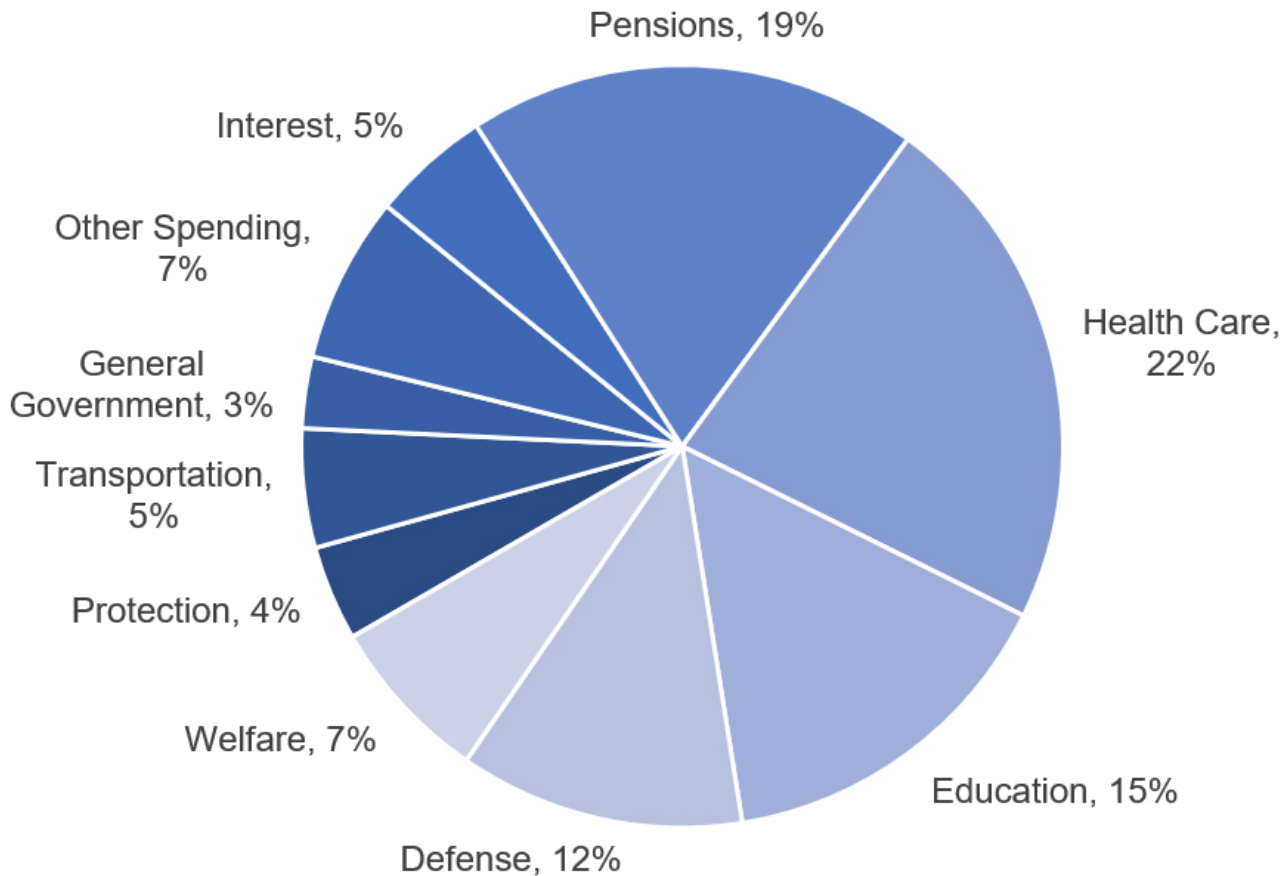
National Institutes of Health



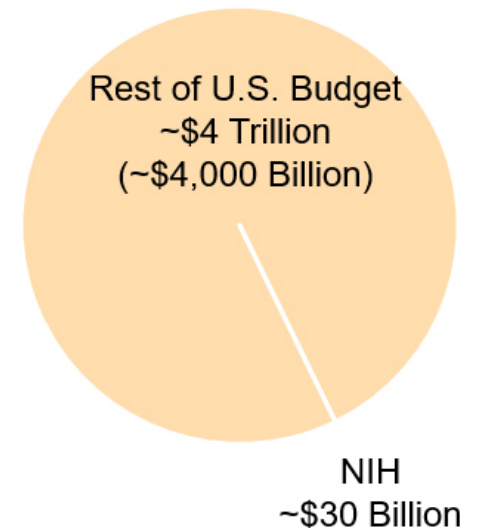
A Typical Institute/Center



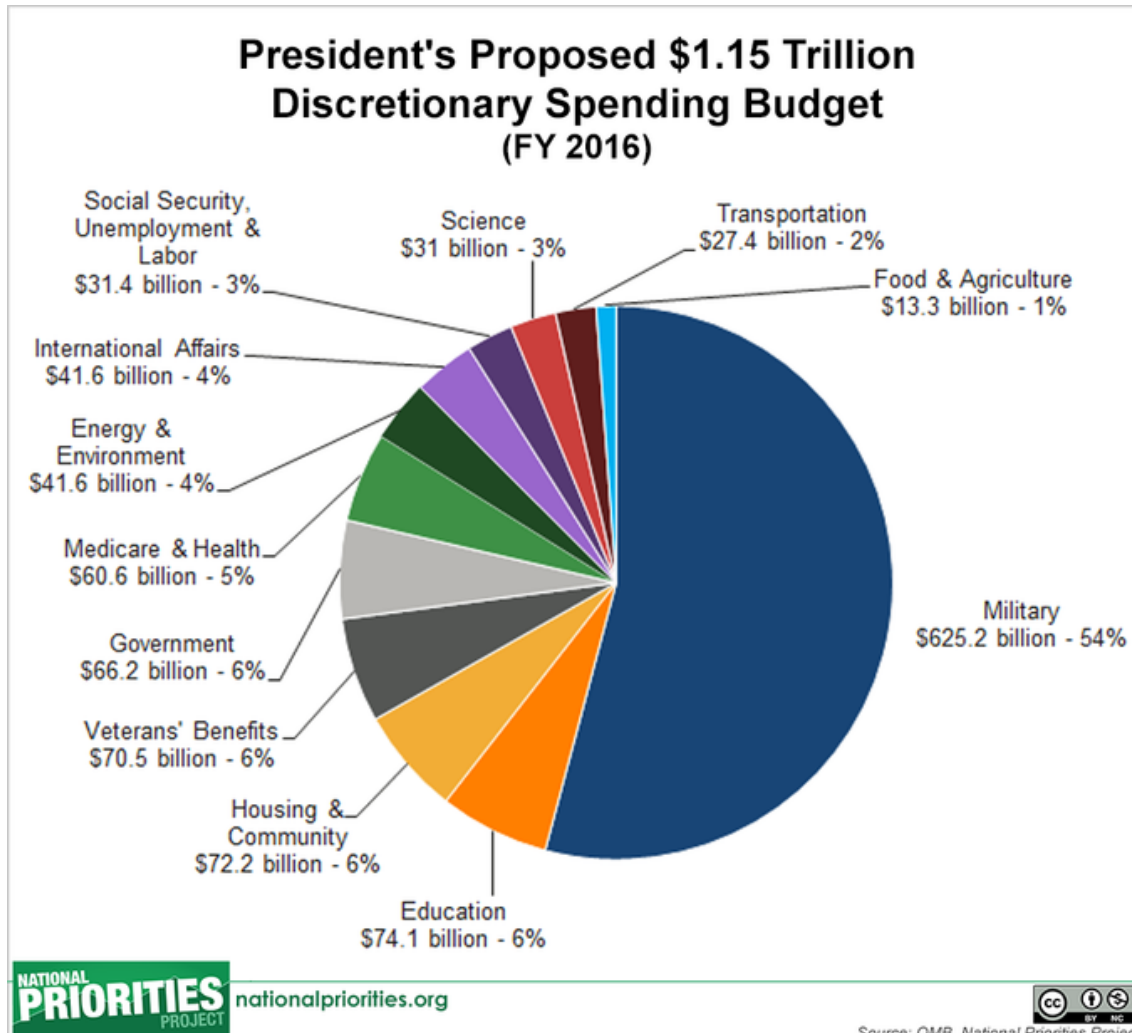
Total Spending for United States – FY2016



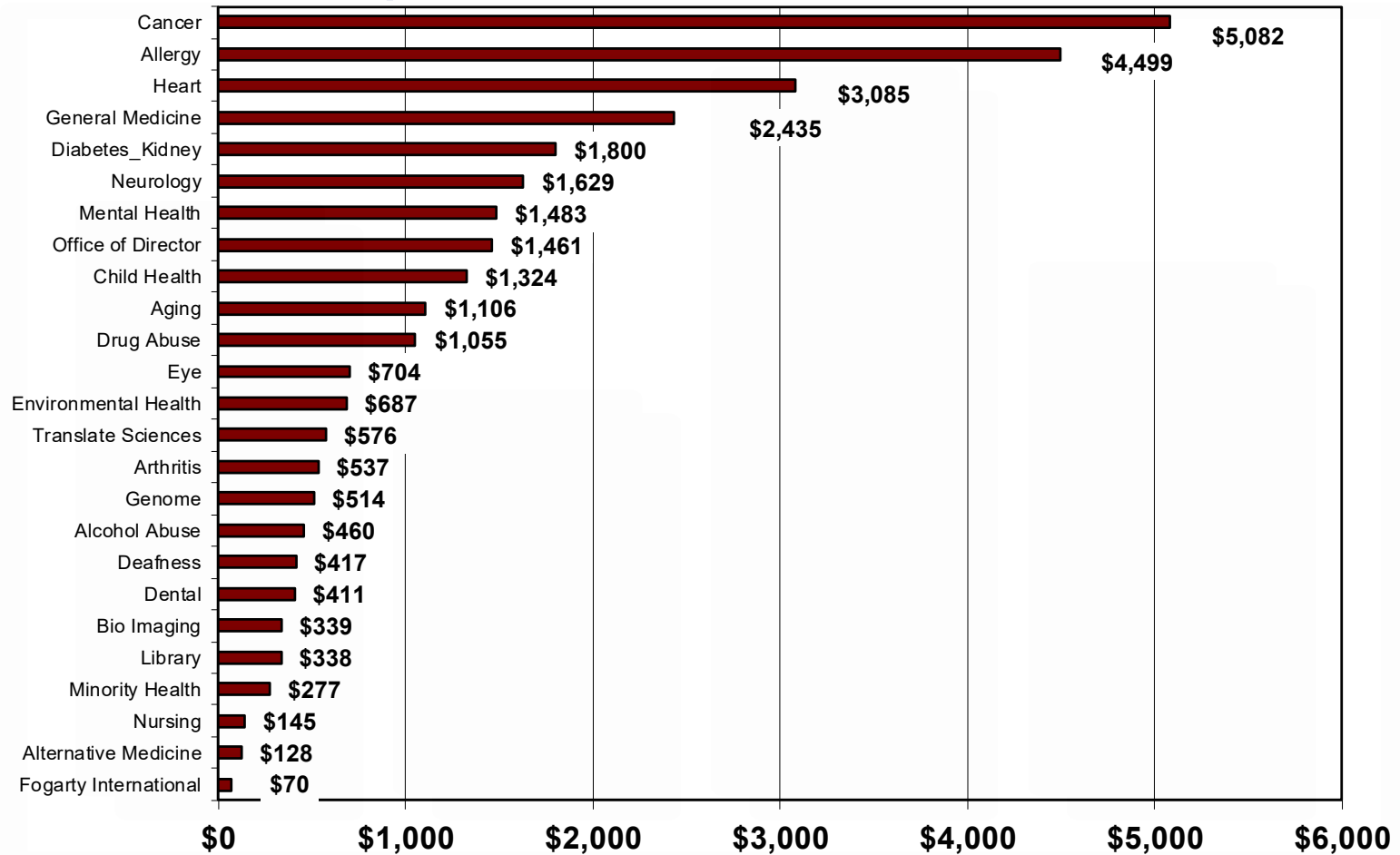
NIH Gets <1% of the U.S. Budget



United States Discretionary Budget Proposed 2016



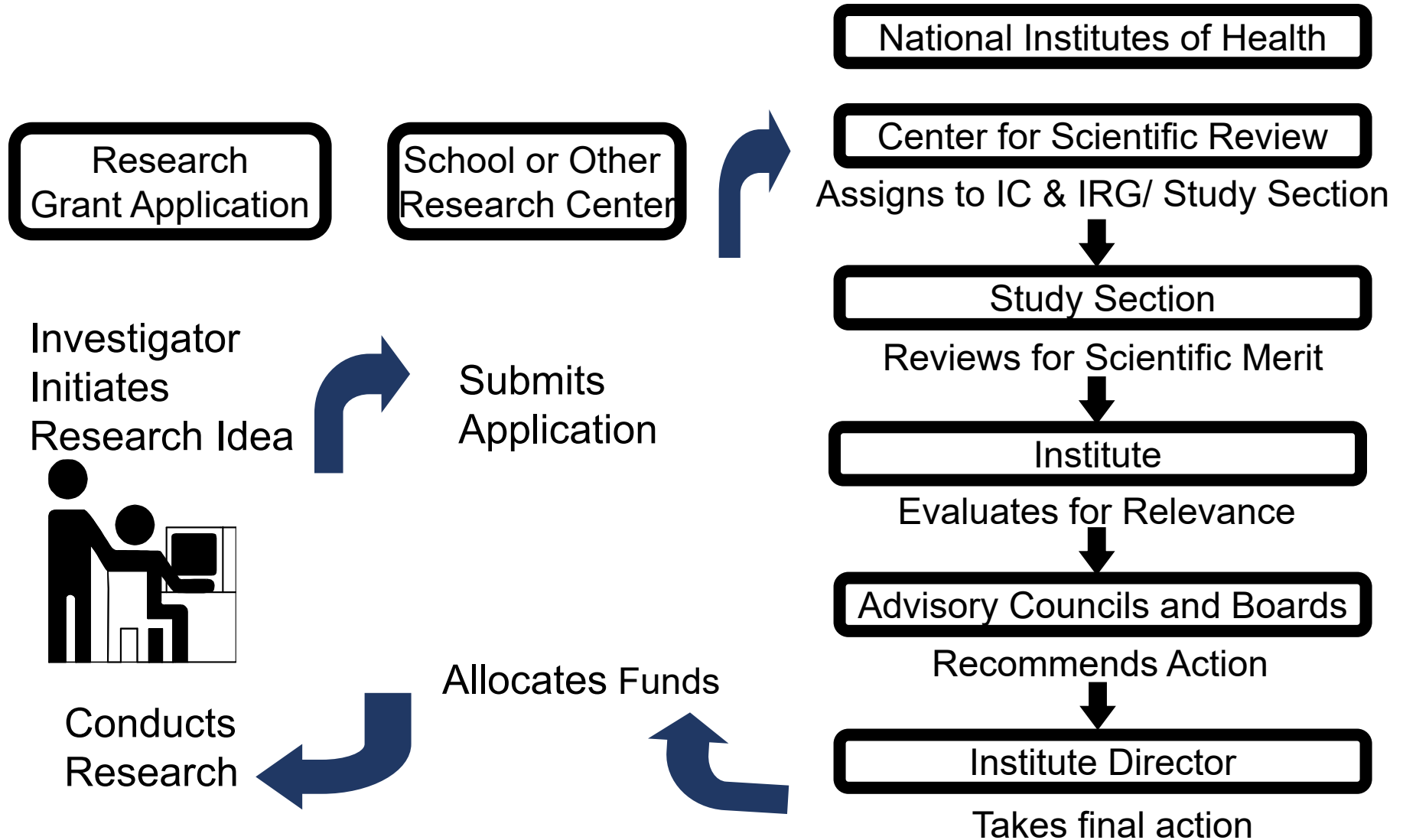
FY 2012 Senate Approved Budget NIH Funding By Institute/Center* (\$ in Millions)



*Includes funding for Type 1 Diabetes.



Review Process for a Research Grant



Review System for Grant Applications

Scientific Review Group (SRG) – First Level

- Independent outside review
- Evaluate scientific merit, significance
- Recommend length and level of funding

Output: Priority Score and Summary Statement

3 - 7 months

Advisory Council – Second Level

- Assess quality of SRG process
- Offers recommendation to Institute Staff
 - Evaluates program priorities and relevance
 - Advises on policy

Output: Funding Recommendations

1 - 3 months

Institute Director

- Makes final decision based on Council input, programmatic priorities
- Must also Pass Administrative Review

Output: Awards or Resubmission



Scoring System

Reviewers have been instructed to score each of the five review criteria, and the overall impact/priority of each application, on a 9-point rating scale according to the following descriptions and additional guidance:

Score	Descriptor	Additional Guidance on Strengths/Weaknesses
1	Exceptional	Exceptionally strong with essentially no weaknesses
2	Outstanding	Extremely strong with negligible weaknesses
3	Excellent	Very strong with only some minor weaknesses
4	Very Good	Strong but with numerous minor weaknesses
5	Good	Strong but with at least one moderate weakness
6	Satisfactory	Some strengths but also some moderate weaknesses
7	Fair	Some strengths but with at least one major weakness
8	Marginal	A few strengths and a few major weaknesses
9	Poor	Very few strengths and numerous major weaknesses

Minor Weakness: An easily addressable weakness that does not substantially lessen impact

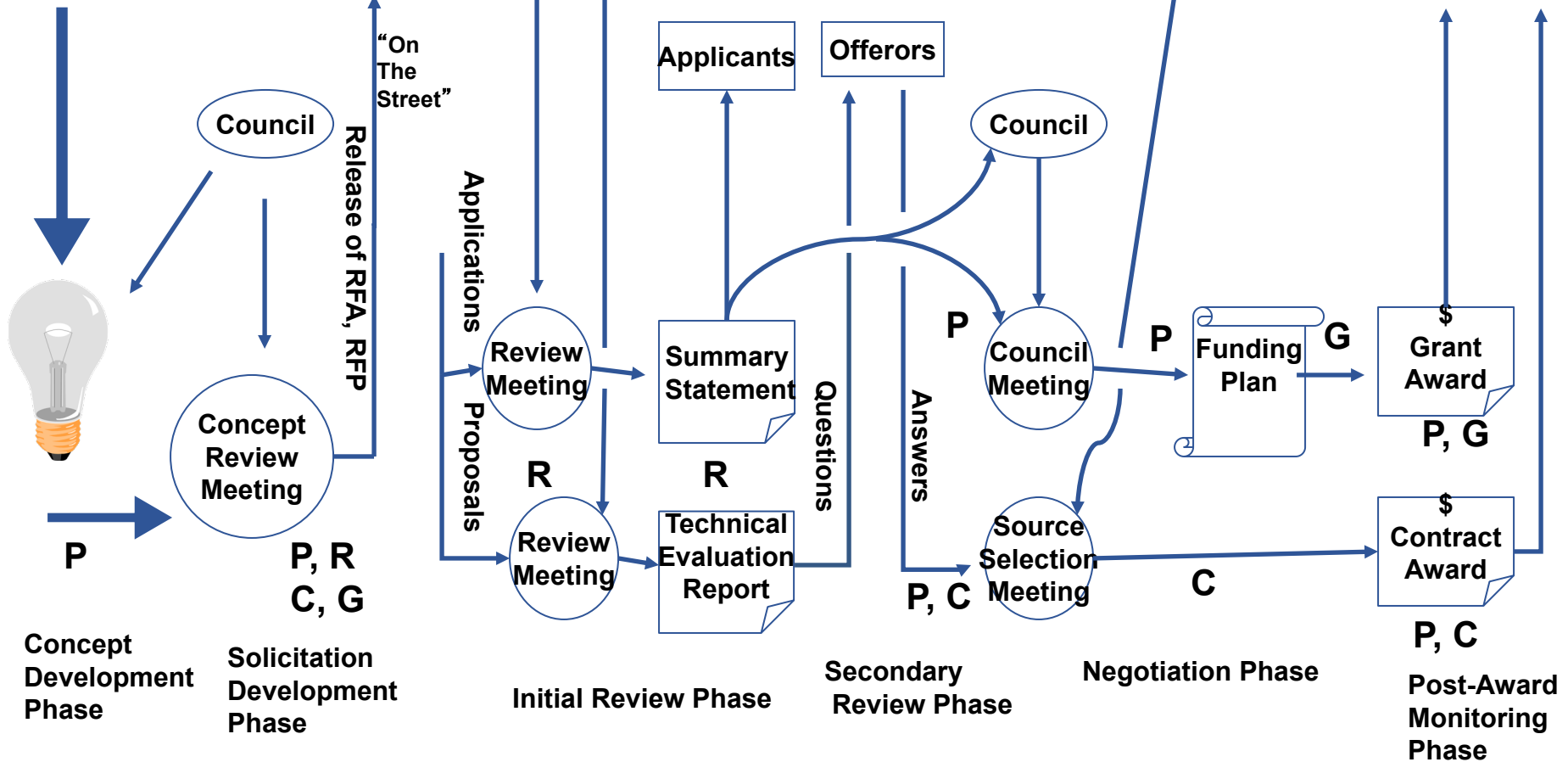
Moderate Weakness: A weakness that lessens impact

Major Weakness: A weakness that severely limits impact



Life Cycle of a Research Concept

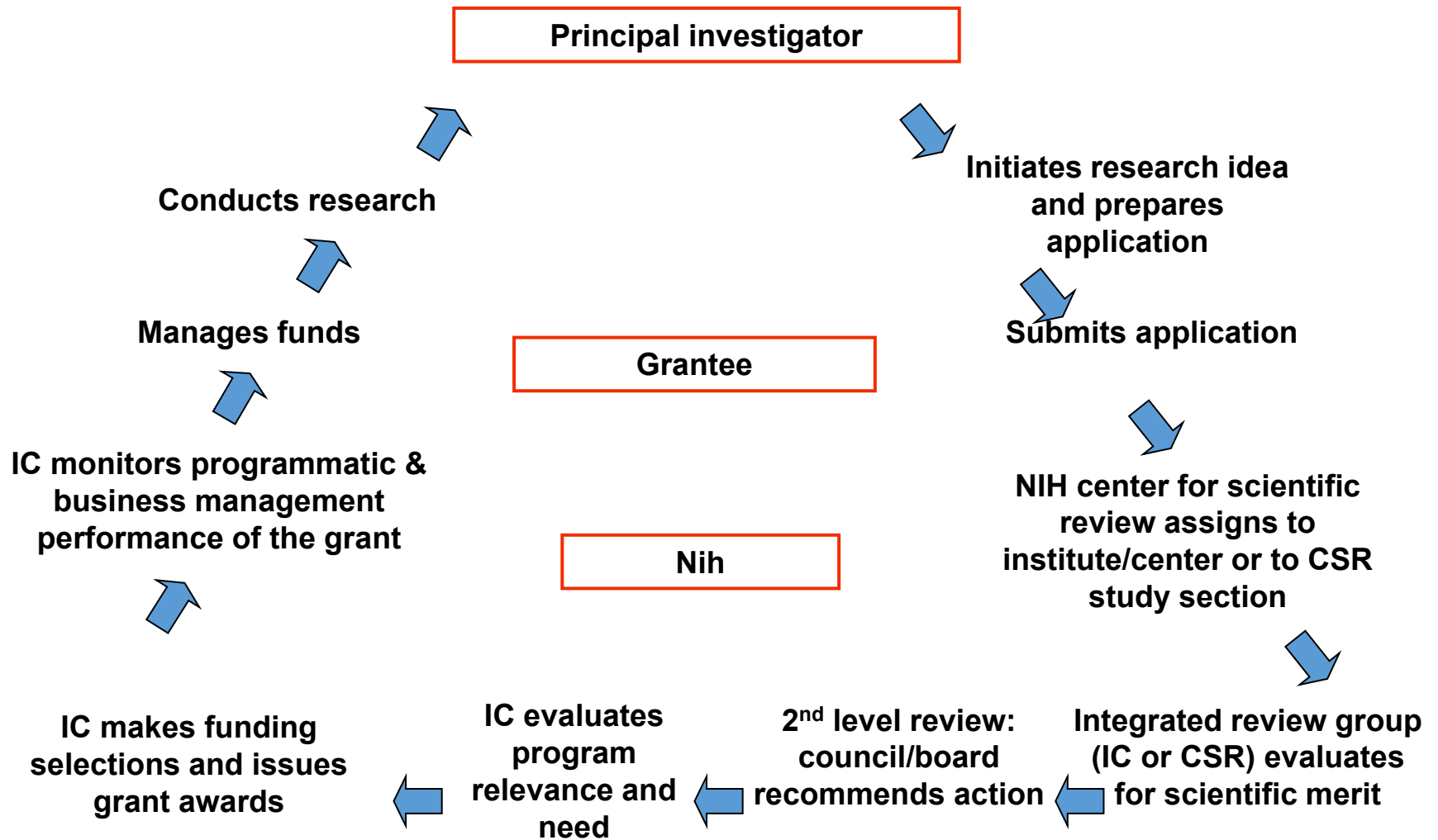
EXTRAMURAL COMMUNITY



P=program, R=review, C=contracts, G=grants



Overview of NIH Grants Process



Timeline: New Applications

Receipt Date	Scientific Review	Council Review	Award Date
February 5	July	October	December
June 5	October	January	April
October 5	March	May	July



Thank You!

- andrew.bremer@nih.gov

